



HORQUILLAS Y SOPORTES



PIV-01
PIV-01-P Con Perno
Renault 6-12/Citroën
Ami 8 Arranque Indiel



PIV-02
PIV-02-P Con perno
Renault 12 TS Arranque Indiel



PIV-04
PIV-04-P Con perno
Ford Taurus
Arranque Indiel Frontal



PIV-06
PIV-06-P Con perno
Peugeot
Arranque Tamatel



PIV-07
PIV-07-P Con perno
Rastrojero Indenor
IME



PIV-08
PIV-08-P Con perno
Peugeot
404 Arranque Garef



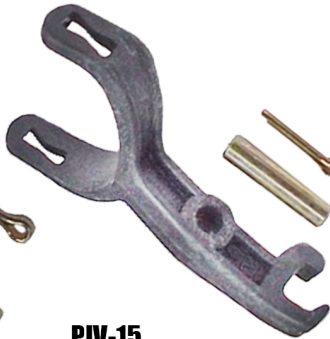
PIV-12
PIV-12-P Con perno
Torino Frontal M-100
Arranque Indiel



PIV-13
PIV-13-P Con perno
Bosch M. Benz Brasil
Con attanque JF



PIV-14
PIV-14-P Con perno
Fiat 1.500
Arranque Garef.



PIV-15
PIV-15-P Con perno
Fiat 125
Arranque Garef



PIV-16
PIV-16-P Con perno
Fiat 128 Arranque
Garef



PIV-17
PIV-17-P Con perno
Fiat 600
Arranque Garef



PIV-19
PIV-19-P con perno
Chevrolet/Ford
Arranque Indiel



PIV-20
PIV-20-P Con perno
AN-115
Arranque Indiel



PIV-21
PIV-21-P Con perno
Rastrojero
Bosch-DA



PIV-21/1
PIV-21/1-P Con perno
Rastrojero SD
Arranque Bosch



HORQUILLAS Y SOPORTES



PIV-21/2
PIV-21/2-P Con perno
Horquilla rastrojero
RD arranque Bosch



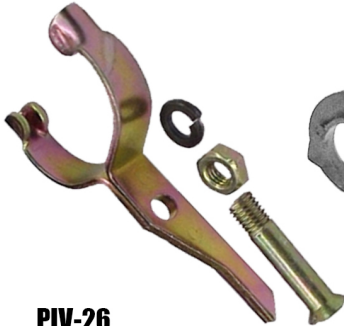
PIV-23
PIV-23-P Con chaveta
Horquilla Dogge
1.500 arranque Tria



PIV-24
PIV-24-P Con perno
Horquilla arranque
Roher Indenor



PIV-25
PIV-25-P Con perno
Horquilla arranque
Nashville Mod. Viejo



PIV-26
PIV-26-P Con perno
Horquilla arranque Nash
ville Mod. Nuevo



PIV-27
Conjunto horquilla
Frontal Sierra/
Renault-11
Indiel Frontal M93



PIV-28
PIV-28-P Con perno
Horquilla arranque
Tria Dodge 1.500



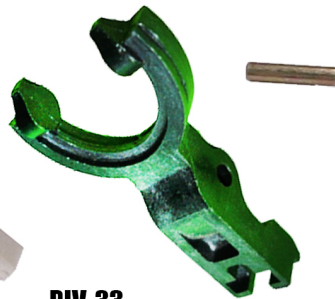
PIV-29
PIV-29-P Con perno
Arranque Wapsa MWM
Perkins Ford-14.000
(Cód.21.413)



PIV-31
Fiat 147 Duna
Uno Ford Escort
9001082207



PIV-32
PIV-32-P Con perno
Arranque Valeo D9E
Renault 18 Diésel
Paris-Rhône



PIV-33
PIV-33-P Con perno
WAI 55-9400 Valeo
D6RA 65-16519-Clio
Megane Scenic-Trafic



PIV-34
PIV-34-P Con perno
WAI 55-9400
Arranque Valeo D6RA
Peugeot 306-406-406



PIV-35
PIV-35-P Con perno
Wapsa/VW Senda-D.
Gol-Passat-Santana/Ford
Escort (Cód.214.011)



PIV-36
PIV-36-P Con pivote
Horquilla arranque
Indiel Mod. Hitachi



PIV-37
PIV-36-P Con pivote
R19-11/VW/Gol/Ford
Fiat Duna Diésel
Orig. 10019331111



PIV-38
PIV-38-P Con perno
Horquilla Chevrolet
C-10 Delco Remy
1.1932205



HORQUILLAS Y SOPORTES



PIV-39
Horquilla de Arranque
Renault 19 Argelite



PIV-40
PIV-40-P Con pivote
Fiat Palio/M/Marelli
(Cód. Orig. 63103007-8)



PIV-41
PIV-41-P Con pivote
Arranque Indiel M-93R
Hitachi/Escort 16V-MWM
(Cód. Orig. 35258639)
(Cód. Arr. 58580-940-950-490)



PIV-42
PIV-42-P Con polea
Ford Ka-Fiesta-Escort
Mondeo Courier
Ranger Motocraft



PIV-43
PIV-43-P Con perno
Arranque Bosch Fiat
D-Daily Transit Escort
(Cód. 1001933061)



PIV-44
PIV-44-P Con pivote
Valeo D7E Renault
Kangoo Fiat Duna
Weekend-Palio-Siena
Ford Fiesta Courier
Motor Sohc Mot. Zetec



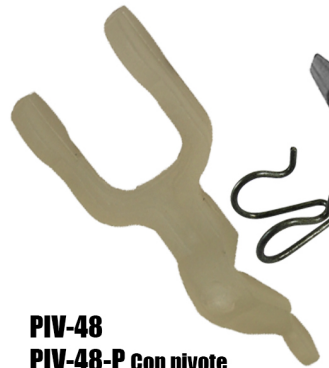
PIV-45
Horquilla de
Arranque Toyota
Nippondenso



PIV-46
Horquilla de
Arranque
Nippondenso



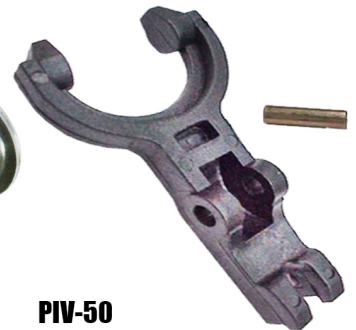
PIV-47
Arran. Mitsubishi
Peugeot 405 TD
h1074



PIV-48
PIV-48-P Con pivote
Arranque Hitachi/-
Chevrolet Corsa
Diésel



PIV-49
PIV-49-P Con polea
Arranque Motorcraft
Ford Mondeo-
Courier-Ranger



PIV-50
PIV-50-P Con perno
Arranque Valeo D9R
Trafic-Trafiect Diesel/-
Peugeot 505 D Sprinter
Master Land Rover



PIV-51
PIV-51-P c/ polea y pivote
Arranque Bosch/Nissan/-
Chevrolet Fiat Ducato
(1001933101-0059)



PIV-52
WAI 55-115
Arranque Delco
10 MT Toyota
Isuzu SD-210-260



PIV-53
WAI 55-117
Delco Remy RMGR
PG260 12 voltios
(Orig. 10504494)



PIV-55
PIV-55-P Con perno
Arranque Argelite
Renault 9



HORQUILLAS Y SOPORTES



PIV-56
PIV-56-P C/ polea y pivote
Arran. M. Marelli
63114014 Fiat Ducato
Daily 2,8 TD



PIV-57
PIV-57-P C/ polea y pivote
Arranque bosch IVECO
Ford F-1000
1223505-003-010



PIV-58
Arranque
Mitsubishi



PIV-59
PIV-59-P Con pivote
Arranque Hitachi
Indiel Mod. Nuevo



PIV-60
PIV-60-P Con perno
Arranque 28 MT
Delco Remy 12Volt
Cummins 3,96 JW
Mercedes-Benz Orig.
10456464



PIV-61
Arranque 37 MT
Delco Remy
12~24 Voltios
Orig. 1985237



PIV-62
Arranque 41 MT
42 MT Delco Remy
Orig. 1988097



PIV-63
Arranque 50 MT
Delco Remy 24-32-64
Voltios Orig. 1945484



PIV-64
Arranque 28 MT
Delco Remy
12~24 vol M/Benz
912-712-1215
Orig. 10457361



PIV-65
PIV-65-P Con pivote
Arranque M. Marelli
Fiorino-Uno
Mod. Nuevo



PIV-66
PIV-66-P Con pivote
Arranque Fiat
M. Marelli



PIV-67
PIV-67-P Con pivote
Arranque Hitachi
Corsa Diesel



PIV-68
Arranque Bosch
Cód. Orig.
1001-933113



PIV-69
Arranque Bosch
Cód. Orig.
1001-933113



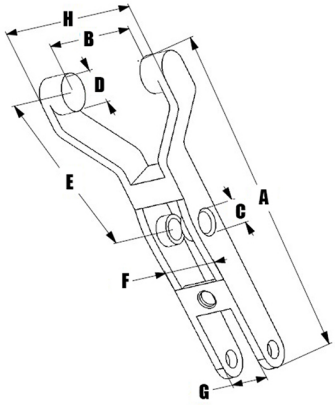
PIV-70
Arranque
Mitsubishi



PIV-71
Arranque
Delco Remy Escor



HORQUILLAS Y SOPORTES



PIV-72
Horquilla Renault
Logan Bosch
FOOCD 1.020



PIV-73
Horquilla Renault
Valeo 190.526
PA66GF30



PIV-74
Horquilla Che-
vrolet Mitsubishi



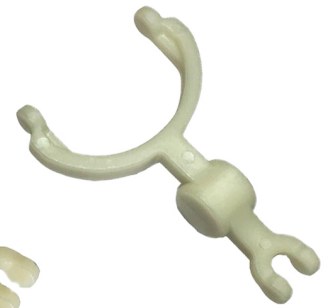
PIV-75
Horquilla Mitsubishi
A:75.0 - B:36.0 C:13.7
D:10.2 - E:40.0 F:11.4



PIV-76
Horquilla Mitsubishi
A:78.0 - B:36.0 - C:15.2 -
D:10.3 - E:43.0 - F:12.0



PIV-77
Horquilla Mitsubishi
A:77.0 - B:36.5 - C:14.8
D:10.8 - E:42.5 - F:11.9



PIV-78
Horquilla Mitsubishi
A:72.0 - B:33.0 - C:14.7
D:7.5 - E:41.7 - F:11.8



PIV-79
Horquilla Valeo
A:83.0 - B:24.0 - C:7.0
D:9.0 - E:41.0 - F:17.0



PIV-80
Horquilla Valeo
A:82.0 - B:24.4 - C:8.0 -
D:9.3 - E:40.0 - F:14.8



PIV-81
Horquilla Mitsubishi
A:74.0 - B:36.0 - C:15.0 -
D:10.0 - E:42.0 - F:12.0



PIV-82
Horquilla Mitsubishi
A:74.0 - B:36.0 - C:15.0 -
D:10.0 - E:41.0 - F:11.7



PIV-83
Horquilla Mitsubishi
A:69.0 - B:22.0 - C:10.0 -
D:5.0 - E:38.5 - F:14.25



PIV-84
Horquilla Mitsubishi
A:75.5 - B:22.5 - C:15.0 -
D:10.3 - E:41.0 - F:11.9



PIV-85
Horquilla Mitsubishi
A:76.0 - B:22.5 - C:14.9 -
D:11.7 - E:43.0 - F:12.0



PIV-86
Horquilla Mitsubishi
A:78.8 - B:24.0 - C:15.0 -
D:9.5 - E:45.0 - F:11.9



HORQUILLAS Y SOPORTES



PIV-87

Horquilla Mitsubishi
A:77.5 - B:23.4 - C:14.7 -
D:10.0 - E:43.0 - F:12.0



PIV-88

Horquilla Mitsubishi
A:80.0 - B:23.0 - C:15.0 -
D:10.0 - E:5.0 - F:12.0



PIV-89

Horquilla Mitsubishi
A:78.5 - B:22.4 - C:15.0
- D:7.0 - E:41.0 - F:12.0



PIV-90

Horquilla Mitsubishi
A:77.0 - B:35.0 - C:14.7 -
D:10.0 - E:43.0 - F:14.0



PIV-91

Horquilla Mitsubishi
A:80.0 - B:41.0 - C:15.0 -
D:10.0 - E:42.0 - F:13.8



PIV-92

Horquilla Mitsubishi
A:75.5 - B:35.5 - C:14.75
D:10.0 - E:45.0 - F:11.8



PIV-93

Horquilla Delco Remy
A:71.3 - B:26.0 - C:9.2/8.3
D:4.0 - E:39.0 - F:11.0



PIV-94

Horquilla Delco Remy
A:80.5 - B:24.0 - C:11.8/10.7
D:7.9 - E:44.0 - F:10.9



PIV-95

Horquilla Delco Remy
A: 80.0 - B:26.8 - C:14.0/12.9
D:8.7 - E:42.0 - F:11.0



PIV-096

Horquilla Delco Remy
A:72.3 - B:24.3 - C:8.0
D:8.0 - E:38.0 - F:16.9



PIV-097

Horquilla Delco Remy
A:73.5 - B:24.7 - C:12.0
D:8.0 - E:39.0 - F:11.0



PIV-098

Horquilla Delco Remy
A: 72.0 - B: 23.6 - C: 14.9/3.8
D: 8.2 - E: 38.0 - F: 10.5



PIV-099

Horquilla Delco Remy
A: 71.5 - B: 24.0 - C: 14.0 -
D: 8.2 - E: 39.5 - F: 11.3



PIV-100

Horquilla Delco Remy
A: 73.5 - B: 24.0 - C: 14.0 -
D: 8.0 - E: 39.0 - F: 11.7



PIV-101

Horquilla tipo Bosch
A: 81.0 - B: 31.7 - C: 8.0 -
D: 4.8 - E: 39.0 - F: 20.0

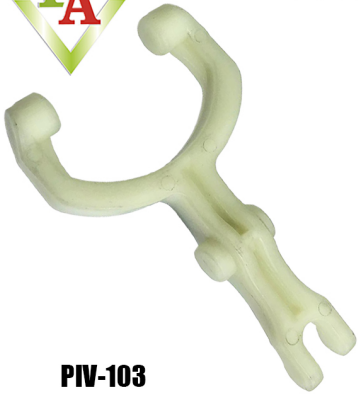


PIV-102

Horquilla Delco Remy
A:71.0 - B:24.0 - C:13.9 -
D:8.2 - E:39.0 - F:11.6



HORQUILLAS Y SOPORTES



PIV-103

Horquilla Delco Remy
A:72.0 - B:24.0 - C:8.0 -
D:8.2 - E:39.0 - F:14.0



PIV-104

Horquilla Delc Remy
A:70.5 - B:23.9 - C:8.0 -
D:8.0 - E:37.0 - F:13.4



PIV-105

Horquilla Honda
A:72.0 - B:29.0 - C:13.8
- D:9.7 - E:37.0 - F:14.5



PIV-106

Horquilla Honda
A:75.0 - B:29.0 - C:13.8 -
D:9.9 - E:40.0 - F:14.5



PIV-107

Horquilla Honda
A:72.0 - B:28.6 - C:13.8 -
D:9.2 - E:36.0 - F:14.4



PIV-108

Horquilla Honda
A:71.0 - B:29.0 - C:13.8 -
D:10.0 - E:37.0 - F:14.4



PIV-109

Horquilla tipo Honda
A:73.0 - B:20.3 - C:7.0 -
D: 12.5 - E:40.0 - F:6.7



PIV-110

Horquilla Honda
A:73.0 - B:20.0 - C:7.0 -
D:12.3 - E:41.0 - F:7.0



PIV-111

Horquilla Honda
A:76.0 - B:21.0 - C:7.0 -
D:11.0 - E:22.0 - F:6.6



PIV-112

Horquilla Honda
A:76.0 - B:20.8 - C:7.0
D:11.0 - E:42.5 - F:6.5



PIV-113

Horquilla Toyota
A:72.0 - B:29.0 - C:13.8 -
D:9.6 - E:37.5 - F:14.5



PIV-114

Horquilla Toyota
A:72.0 - B:30.0 - C:2.7 -
D:7.30 - E:45.0 - 17.0



PIV-115

Horquilla Denso
A:77.0 - B:23.4 - C:7.0 -
D:10.0 - E:42.0 - F:12.7



PIV-116

Horquilla Denso
A:79.0 - B:23.8 - C:7.0 -
D:10.7 - E:43.0 - F:13.0



PIV-117

Horquilla Denso



PIV-118

Horquilla Denso



HORQUILLAS Y SOPORTES



PIV-119
Horquilla Denso



PIV-120
Horquilla Denso



PIV-121
Horquilla Denso
A:94.0 - B:44.6 - C:8.0
D:6.0 - E:55.0 - F:21.6



PIV-122
Horquilla Denso
A:83.0 - E:49.0 - F:12.0



PIV-123
Horquilla Valeo
A:80.0 - B:22.0 - C:5.7 -
D:6.3 - E:43.0 - F:17.0



PIV-124
Horquilla Mitsubishi
A:72.0 - B:32.8 - C:15.0 -
D:7.2 - E:40 - F:11.9



PIV-125
Horquilla Motorcraft
A:85.0 - B:43.0 - D:8.0 -
E:44.0 - F:11.9



PIV-126
Horquilla VALEO fox
Suran GOLF
A:7.5 - B:24.6 - C:6.0
D:7.75 - E:36.5 - F:17.0



PIV-127
Horquilla vALEO
A:71.5 - B:21.6 - C:14.0
D:9.8 - E:41.6 - F:11.9



PIV-128
Horquilla Valeo
A: 76.0 - B: 26.3 - C: 7.8 - D:
8.0 - E: 41.0 - F: 14.8



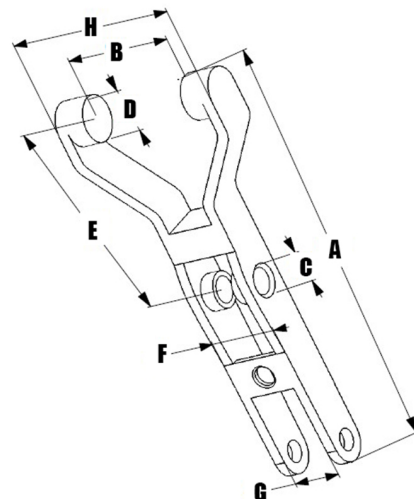
PIV-129
Horquilla Valeo
A: 73.4 - B: 26.0 - C: 14.3 -
D: 8.10 - E: 41.5 - F: 14.3



PIV-130
Horquilla Valeo
A:75.8 - B:21.8 - C:7.8
D:9.9 - E:42.0 - F:16.5



PIV-131
Horquilla Valeo
A:72.0 - B:21.7 - C:14.3
D:9.7 - E:40.5 - F:12.0





HORQUILLAS Y SOPORTES



PV-01
Polea Motorcraft
Escort Courier Ranger
(PIV-42/PIV-49)



PV-02
Polea de Bendix
Bosch/Duna D/Escort
(PIV-37/PIV-51)



PV-03
Polea de Bendix
Bosch Ford 1.000
(PIV-57)



PV-04
Polea de Bendix
M. Marelli/Fiat Ducato
(PIV-56)



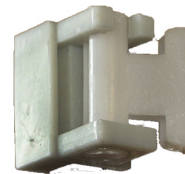
PV-05
Polea de Bendix
Fiat 128 Garef Peugeot



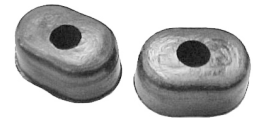
PV-07
Polea Peugeot
Fiat 1.600-125 Garef



PV-08
Polea de Bendix Ford
Sierra Frontal M93



PV-10
Suporte Medio
Renault 9 Argelite



PV-12
Patín de Renault
Peugeot ATR-03



PV-13
Alambre Horquilla
Hitachi



PV-14
Patín de Horquilla
Tamatel DV-026



PV-15
Polea de Bendix
Polara ATT-18



PERNOS Y SOPORTES



AW-09
Perno Wapsa
VW Senda/Ford
14.000



ATV-07
Perno Frontal
Renault 19 Valeo



ATR-04
Perno Renault
Arranque Indiel



MAG-08
Perno Fiat 1.500
Arranque Garef



MAG-19
Perno Fiat 600
Arranque Garef



MAG-32
Perno Fiat 125-128
Garef



AN-05
Perno AN-115
Arranque Indiel



AN-05-1
Perno AN-115
Indiel M/nuevo



AFF-05
Perno Ford/Chevrolet
Arranque Indiel



AFS-07
Perno Ford
Sierra Frontal



AFS-07-1
Perno Ford Taunus
Frontal



AII-02
Perno Indenor
Indiel (Rosca gruesa)



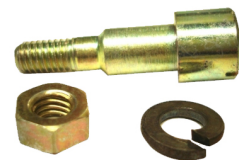
ATT-13
Perno Arranque
Tria



EJD-38
Perno(DA)
Arranque EJD



EJD-38-1
Perno (SD)
Arranque EJD



EJD-38-2
Perno (RD)
Arranque EJD



EJD-38-3
Perno Rastrojero IME



ATB-15
Perno Mercedes-Benz
Arranque Bosch



PIV-31-P
Perno Chevette
Arranque Bosch



PIV-10-P
Perno Citroën Indiel



TRABAS Y SOPORTES



AFS-23
Soporte Ford
M93



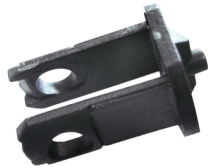
AFS23-1
Soporte Frontal
Indiel M93
Mod. Nuevo



PS-01
Soporte Bosch
Corto Fiat
Palio-Siena



PS-02
Soporte Bosch
Mediano
VW Polo-Gol



PS-03
Soporte Bosch
Largo Duna 1,7D



PS-04
Soporte Magneti
Marelli Ducato

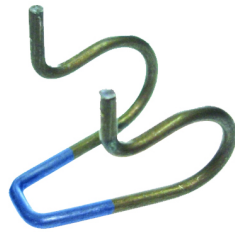


PS-06
Soporte Bosch
Grande F-1000

PS-06
Soporte Bosch
Grande F-1000



PS-08
Soporte Hitachi
Arranque M93R



PS-09
Soporte azul
Arranque Indiel



PS-10
Soporte Blanco
Arranque Indiel



PS-11
Soporte Amarillo
arranque Indiel



PS-12
Soporte Doble
Arranque Indiel



PS-13
Res- Autom. Indiel
Doble rosca Grande



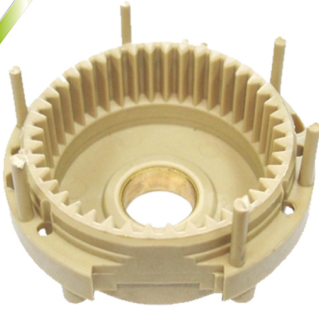
AN-10
Seguro eje
de horquilla
AN 115



ATR-02
Seguro de eje
de horquilla
Renault



PLANETARIOS-REDUCTORES



CP-0303 Bosch

Fiat Uno TD-Duna Escort D
VW Golf D. TD (9005821303)
A: 18.0 - B: 52.6 - C: 74.5 - D: 31.0
Z: 42



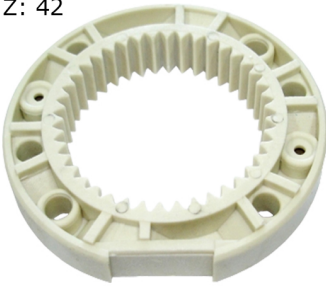
CP-0307 Bosch

(1005821307) Fiesta-Escort
Orion Alfa Romeo Polo-Golf Passat
Transporter-Pointer Buje 2.082
A: 18.0 - B: 47.3 - C: 70.0 - D: 24.0
Z=37



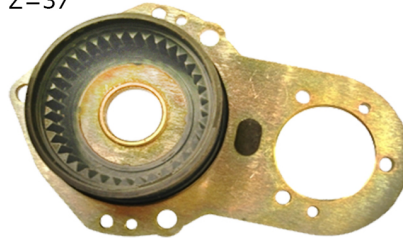
CP-0307-1

Fiesta-Escort Orion Alfa Romeo
Polo Golf Passat Transporter Pointer Con
engranajes Buje 2.082 A: 18.0 - B: 47.3
C: 70.0 - D: 24.0 - Z=37



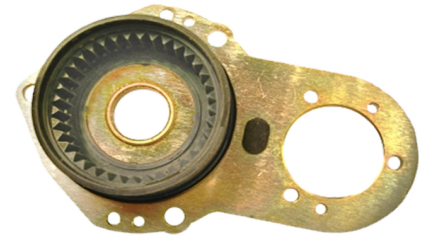
CP-0322 Bosch

Alfa D/Ducato Citroën M/Benz
B: 53.9 - C: 86.0 - D: 14.7
Z=42



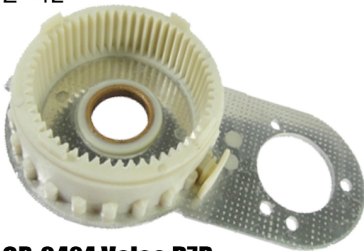
CP-0422 WAI 76-94809

Chevrolet Corsa/Renault 19
Express-Clio Diente Fino Valeo D6RA
A: 18.0 - B: 43.8 - C: 60.4 - D: 25.0 Z:59



CP-0423 Valeo D6RA

Chevrolet Corsa/Peugeot
Valeo Diente Grueso
A: 18.0 - B: 44.1 - C: 60.5 - D: 25.0 Z:41



CP-0424 Valeo D7R

Peugeot 306 405 Renault 19 Clio
A: 20.0 - B: 54.8 - C: 72.0
D: 27.5 - Z=56



CP-0500 Motorcraft

Ford Ka-Escort-Fiesta Motor Zetec
(96BB11000-AA7.119BI)
A: 19.0 - B: 52.7 - C: 63.0 - D: 24.5
Z=45



CP-0510 Bosch

Bosch Renault
Clio D Express
A: 18.0 - C: 74.0 - D: 32.7



CP-0520 Bosch

(1006200110123/128)
Polo-Golf Escort/Transit/Fiesta
A: 18.0 - B: 51.5 - C: 74.0 - D: 26.0
Z=42



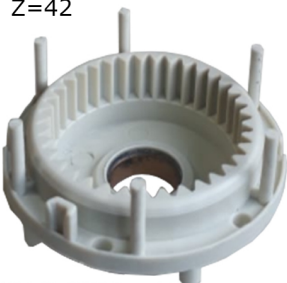
CP-0530 Bosch

Cód. Orig. (1006200161)
Renault Laguna 2.2-Clio
A: 18.0 - B: 45.3 - C: 70.0 - D: 24.0
Z=36



CP-0531 Bosch

Cód. Orig. (23371F4029)
Nissan/Toyota M/Orig. 9008046015
A:18.0 - B: 45.0 - C:69.8 - D: 23.6
Z=36



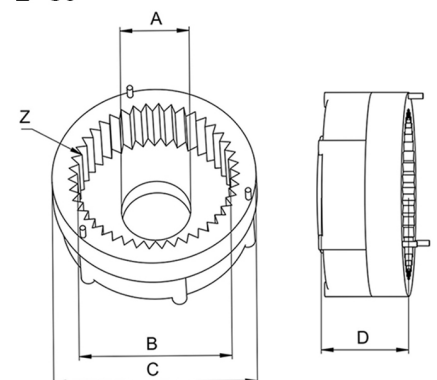
CP-0532 Bosch

Alfa Romeo 155.164
Peugeot 605 A: 18.0 - B: 47.1
C: 69.8 - D: 27.0 - Z=37



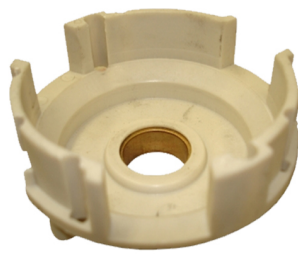
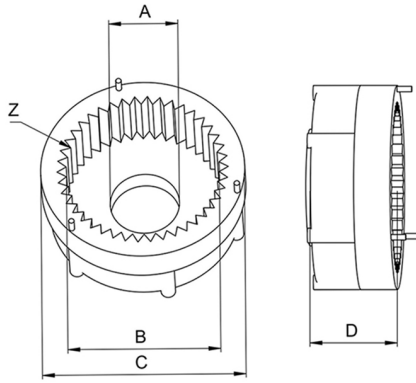
CP-0532-1

Alfa Romeo 155.164 Peugeot 605
Con engranajes A: 18.0 - B: 47.1
C: 69.8 - D: 27.0 - Z=37

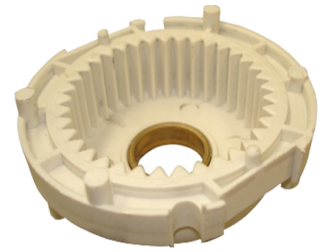




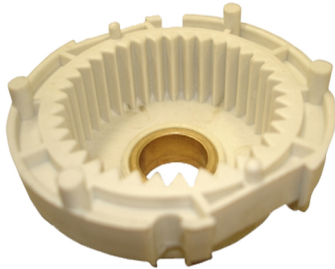
PLANETARIOS-REDUCTORES



CP-0533 Bosch
Clio Express D Renault 19
A: 18.0 - C: 74.0 - D: 32.7
Buje 451



CP-0540 Motorcraft
Transit-Ecosport F-100-Escort-Mondeo
Transit Starter F8TU-1000DD9251-AI
A: 19.0 - B: 46.6 - C: 72.9 - D: 25.0
Z=37



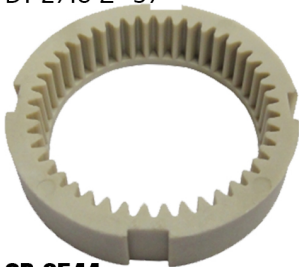
CP-0541 Motorcraft
Escort-Courier-Fiesta Transit 4 E
Starter A: 17.5 - B: 47.0 - C: 73.4
D: 27.8 Z=37



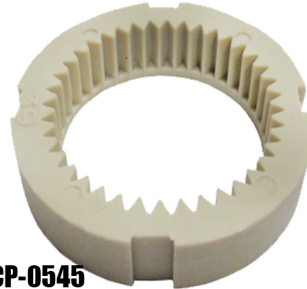
CP-0542
Ford Ka Motorcraft
B: 50.5 - C: 62.5 - D: 25.5 - Z=59



CP-0543
Fiat Palio-Siena/M. Marelli
GM Blazer Vortec V6 B: 46.3
C: 60.7 D: 25.5 Z= 37



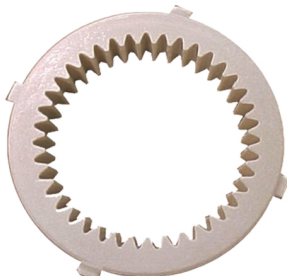
CP-0544
Fiat Palio-Siena/M. Marelli
B: 50.5 - C: 65.0 - D: 14.0 - Z=44



CP-0545
Fiat Palio-Siena/M. Marelli B: 46.5 -
C: 65.3 - D: 14.25 Z=39



CP-0546
Fiat Palio-Siena/M. Marelli B: 47.2
C: 65.0 - D: 14.3 - Z=37



CP-0550
M. Marelli Fiat Ducato B: 46.3
C: 64.0 - D: 13.8 - Z: 39



CP-0560 Delco Remy
Starter PG-150-s - PG-260
S-10-Blazer/Vectra Astra-Corsa
Motor II SOHC (9000846)A: 22.3
B: 48.6 - C: 61.9 - D: 29.0 - Z: 50



CP-0561 Bosch
Polo D/Transporter/Passat
1006200059 Buje 2.082
A: 18.0 - C: 69.8 - D: 28.3



CP-0562 Bosch
Renault Twingo-Kangoo
1006200194
A: 18.0 - C: 69.9 - D: 25.0



CP-0564 Delco Remy
(9000890/1/3)
Vectra-Astra-S-10 Blazer
Motor II SOHC 1,8/2,0/2,2 Z:50



CP-0564-1
Amortiguador Delco remy
planetario corsa



PLANETARIOS-REDUCTORES



CP-0565 WAI 761873

Delco Remy/Blazer/Ford Motor
vortex 4,3L V6 S-10 Serie RMGR
A: 22.3 - B: 47.0 - C: 67.0 - D: 34.5
Z=48



CP-0566 Mitsubishi

Chevrolet Omega 4,1 Clark Yale Renault
A: 17.5 - B: 47.0 - C: 65.0 D: 30.0
Z=42



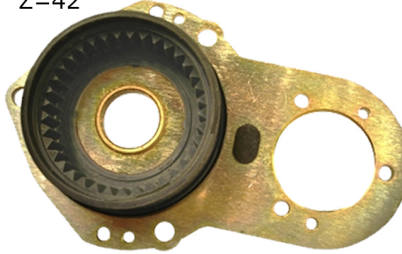
CP-0566-1

GOMA DE PLANETARIO
DELCO / MITSUBISHI



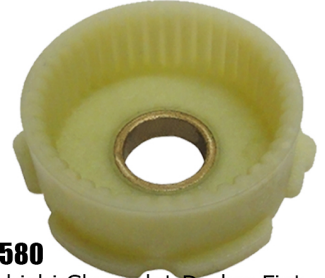
CP-0567 Lucas (0082)

Chevrolet Silverado D-20 Ford
MWM Cargo-Sprinter M93R Ducato
Maxion



CP-0568 Valeo D6RA

Chevrolet Corsa/Peugeot/Valeo
Diente Grueso A: 12.0 - C: 12.0 - D: 82.6
E: 16.5 - G: 25.2 - H: 79.8 - I: 10 - Z: 37



CP-0580

Mitsubishi Chevrolet Dodge Fiat
Renault Ford A: 19.0 - B: 49.7
C: 64.8 - D: 30.0 - Z: 43



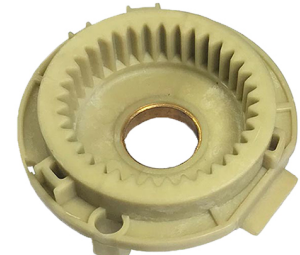
CP-0581

Marelli/Fiat
B: 51.3 - C: 62.0 - D: 23.5 Z=43



CP-0582 Valeo

Renault Valeo A: 17.0 - B: 50.0
- C: 59.7 - D: 23.4 - Z: 47



CP-0583 Valeo

Reductor Bosch Renault
A: 18.0 - B: 40.5 - C: 66.0 D: 22.5
Z: 36



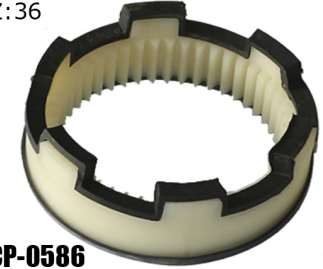
CP-0584

Reductor Marelli E70R
A=13,8; D=58,5; I=46,8; Z=37



CP-0585

Reductor Motorcraft
A: 19.0 - C: 72.8 - D: 24.0 Z=37



CP-0586

M100R M101R Ford Cargo VW-Indiel
B: 57.9 - C: 92.9 - D: 22.0 - Z=48



CP-0587

Citroen Xsara Bosch
A: 18.0 - B: 43.7 - C: 66.0 - D: 22.5
Z=37



CP-0588

Renault Valeo Master
A: 20.0 - B: 54.8 - C: 67.5 - D: 36.5
Z=59



CP-0589

Planetario Valeo Z: 56 Gol
Transporter Kia Hyundai



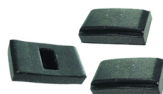
CP-0590

Goma de reductor
Largo 25 Ancho 12
Alto 10



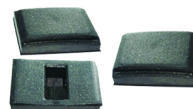
CP-0591

Goma de reductor
Largo 25,4 Ancho 15
Alto 11



CP-0592

Goma de reductor
Largo 20 Ancho 12
Alto 6



CP-0593

Goma de reductor
Largo 20 Ancho 15
Alto 5,50

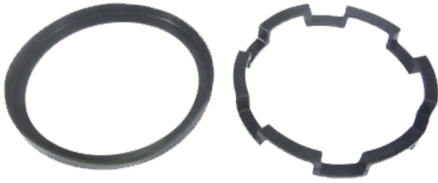


CP-0594

Taco de reductor Indiel
Largo 25 Ancho 11,25
Alto 9,65



PLANETARIOS-REDUCTORES



CP-0595
Juntas de planetario
Indiel M100R



CP-0596
Antivibrador de planetario
Indiel M74R



SE-004
Seeger traba
de Reductor Bosch



SE-005
Seeger traba de
Reductor Motorcraft



CP-0700
Tapa planetario Bosch
Grande



CP-0701
Tapa planetario Indiel M93R
M100R



CP-0702
Tapa planetario
Motorcraf



CP-0703
Tapa planetario Bosch
CHICA



CP-0704
Tapa planetario
Motorcraf



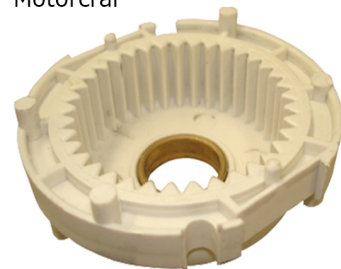
CP-0705
Tapa planetario
Motorcraf



CP-0706
Citroeen Xsara Bosch
A: 18.0 B: 46.4 - C: 66.0 - D:
22.5 Z=42



CP-0707
Planentario tipo toyota
A: 18.0 - B: 51.4 - C: 68.0
D: 28.0 - Z=55



CP-0708
Planentario tipo Motorcraf
A: 17.5 - B: 47.0 - C: 73.4
D: 27.8 - Z:33



CP-0709
Planentario tipo toyota
A: 18.0 - B: 51.3 - C: 68.0
D: 23.0 - Z: 55



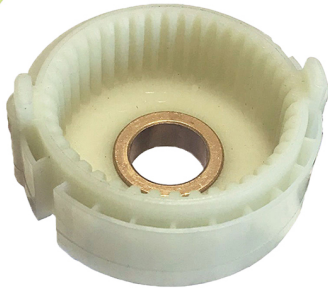
CP-0710
Planentario tipo Bosch
A: 18.0; C: 65.8 D: 22.5



CP-0711
Planentario tipo Delco Remy
A: 22.3 - B: 48.7 -
C: 62.0 - D: 29.0 - Z: 50



PLANETARIOS-REDUCTORES

**CP-0712**

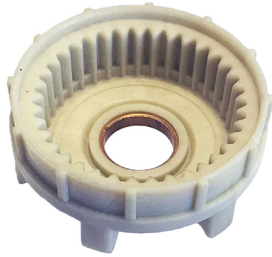
Planetario tipo MitsubishiA:
A: 17.5 - B: 47.3 -
C: 63.9 - D: 30. - Z: 42

**CP-0713**

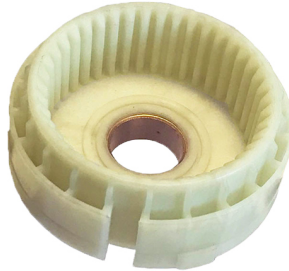
Planetario tipo Valeo
A: 17.0 - B: 46.8 - C: 59.8 -
D: 23.0 - Z: 47

**CP-0714**

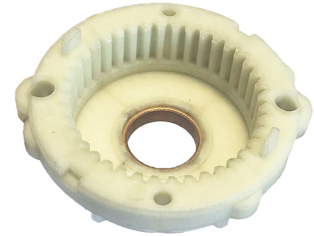
Planetario tipo Valeo
A: 17.0 - B: 44.8 - C: 60.1
D: 23.3 - Z: 41

**CP-0715**

Planetario tipo Valeo A: 17.0
B:43.8 - C:60.0 - D:23.0 - Z:37

**CP-0716**

Planetario tipo Mitsubishi A: 17.5
B:47.3 - C:64.9 - D:30.0 - Z:42

**CP-0717**

Planetario tipo mitsubishi A: 17.5 -
B: 43.4 - C: 62.0 - D: 23.0 - Z: 40

**CP-0718**

Planetario tipo Motorcraft
A: 18.0 - C: 72.8 - D: 24.0

**CP-0719**

Planetario tipo Delco Remy A: 22.3
- B: 46.4 - C: 62.0 - D: 31.0 - Z: 48

**CP-0720**

Planetario Nipon Denso B:47.0
C: 70.8 D: 23.7 - Z: 37

**CP-0721**

Planetario Nipon Denso
B: 52.2 - C: 70.0 - D: 24.3 - Z: 43

**CP-0722**

Planetario tipo Honda B: 52.4
C: 63.6 - D: 24.5 - Z: 45

**CP-0723**

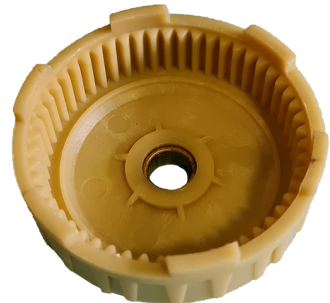
Planetario tipo Honda B: 52.3
C: 65.8 - D: 22.0 - Z: 42

**CP-0724**

Planetario tipo Valeo VW A: 20.0
B: 54.8 - C: 67.5 - D: 36.5 - Z: 56

**CP-0725**

Planetario tipo Valeo Kia Hyundai
A: 20.0 - B: 54.7 - C: 72.2 - D: 28.0
Z: 56

**CP-0726**

Plantario tipo Bosch A: 9.0 - B: 47.8 -
C: 57.8 - D: 23.3



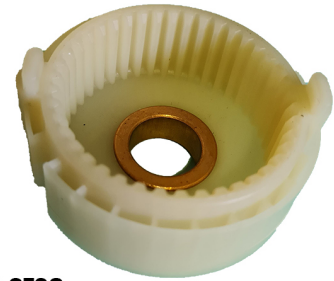
PLANETARIOS-REDUCTORES

**CP-0727**

Planetario tipo Denso A: - - B: 47.0 - C: 66.0 - D: 22.5

**CP-0728**

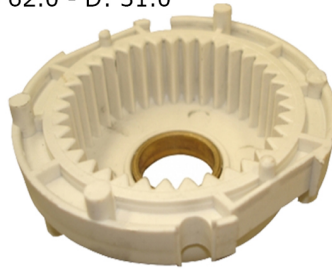
Planetario tipo Delco A: 22.3 - B: 46.4 - C: 62.0 - D: 31.0

**CP-0729**

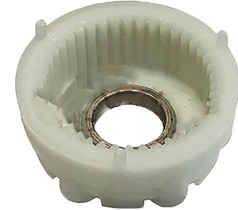
Planetario tipo Mitsubishi A: 17.5 - B: 47.3 - C: 63.9 - D: 30.0

**CP-0730**

Planetario tipo Bosch Fiat A: 17.0 - B: 46.8 - C: 59.8 - D: 23.0 Z: 40

**CP-0731**

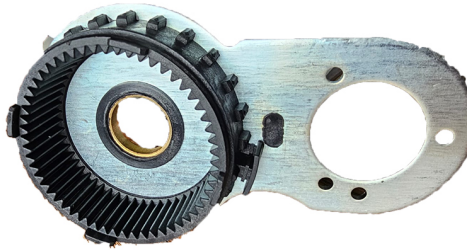
Planetario tipo Motorcraf A: 19.0 - B: 46.7 - C: 72.8 - D: 28.0 - Z: 37

**CP-0732**

Planetario tipo valeo Fiat Ford A: 17.0 - B: 43.8 - C: 60.0 - D: 23.0 - Z: 42

**CP-0733**

Planetario tipo Iniel AGRAL CATERPILLAR A: 21.8 - B: - - C: 93.0 - D: 42.0

**CP-0734**

Planetario tipo Valeo Peugeot A: 20.0 - B: 54.7 - C: 72.0 - D: 27.5 Z: 56

**CP-0735**

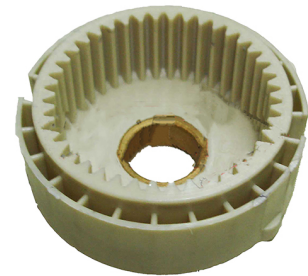
Planetario Denso Fiat Uno A: 11.0 - B: 39.0 - C: 54.6/49.2 - D: 17.0

**CP-0736**

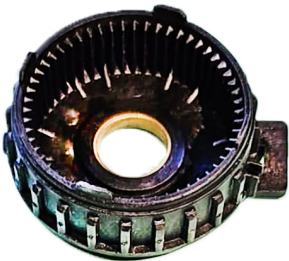
Planetario Bosch M Benz BMW A: 18.0 - C: 70.0 - D: 24.7

**CP-0737**

Planetario tipo Indiel M93R A: 18.0 - C: 91.1 - D: 25.0

**CP-0738**

Planetario Mazda Miata A: 17.5 - B: 47.0 - C: 64.0 - D: 29.8 Z: 42

**CP-0739**

Planetario tipo Valeo VW Amarak A: 20.0 - B: 54.7 - C: 71.5 D: 26.3 - Z: 56

**CP-0740**

Planetario tipo Honda A: 13.6 - B: 41.8 - C: 71.1 - D: 24.0 - Z: 41

**CP-0741**

Planetario Audi, Volkswagen A: 20.0 - B: 54.8 - C: 67.5 D: 36.5 - Z: 56



ENGRANAJES Y TRABAS



CP-0570
Engr Motorcraft
Int. 6,00 Ext. 19,20
Alt. 8,55 Dien. 13



CP-0571
Engr Bosch grande
Int. 5,00 Ext 18,20
Alt 10,42 Dien. 12



CP-0572
Engr Delco Remy
Int. 6 Ext. 18,60
Alt. 10, Dien. 17



CP-0573
Engranaje Hitachi
Int. 6 Ext 20,00
Alt 7 Dien. 14



CP-0574
Engranaje Valeo
Int. 4 Ext. 18,72
Alt. 7 Dien. 22



CP-0575
Engr Motorcraft
Ford K (cp-500)
Int. 6 Ext. 22
Alt. 9 Dien. 18



CP-0576
Engr M. Marelli
Int. 6; Ext. 19,18
Alt. 8,54; Dien. 13



CP-0577
Delco Remy
Int. 6; Ext. 22
Alt. 9; Dien. 20



CP-0578
MWM Ford Chev.
Int. 6; Ext. 18,5
Alt. 10 Dien. 12



CP-0579
Valeo chino
Int. 4 Ext. 20
Alt. 7,5 Dien. 15



CP-0597
Delco Remy
Int. Ext.
Alt. Dien. 16



CP-0598
Delco Remy
Int. Ext.
Alt. Dien. 19



CP-0599
Indiel M100R
Int. Ext.
Alt Dien. 18



CP-0600
Indiel M101
Int. Ext.
Alt. Dien. 16



CP-0601
Valeo
Int. Ext.
Alt. Dien. 19



AIF-08
Perno de Impulsor



AIT-03
Espiga de traba impulsor



AIT-11
Piñon de arranque tornado



SE-001
Seeger traba de Bendix Fiat 128



SE-002
Seeger traba de Bendix Fiat 125



SE-003
Seguro traba de Bendix M-93 Frontal (AFS-16)



SE-006
Seeger traba de Bendix Polara (ATT-18)



SE-007
Seeger traba de Barril IKA (AIF-07)



PLANETARIOS-REDUCTORES



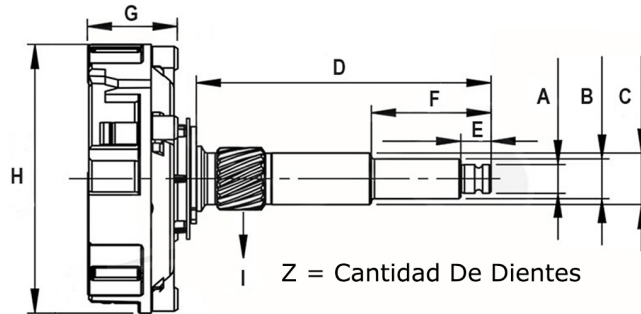
CP-1000

Planetario KADETT, OMEGA, S-10, VECTRA, ZAFIRA, BLAZER, ASTRA, PASSAT AUDI A4 AUDI A6 1 006 200 110 Medidas: A: 12.0 - B: - - C: 12.0 - D: 92.5 - E: 21.5 - F: - G: 23.5 - H: 70.0 - I: 10 - Z: 37



CP-1001

Planetario FORD: ESCORT 1.6I/1.8I/2.0I, VERONA 1.8I/2.0I, SEAT: INCA 1.6 EFI, F 000 AL1 015 9 000 081 001, 9 000 081 002 Medidas: A: 12.0 - B: - - C: 12.0 - D:



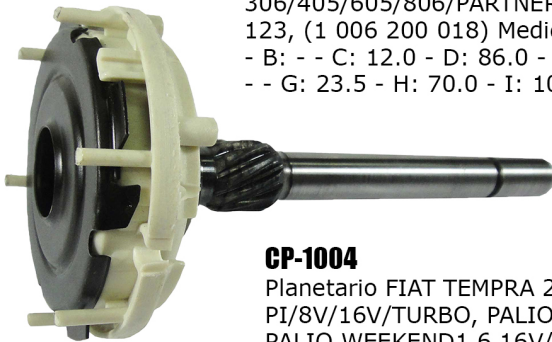
CP-1002

Planetario AUDI: 100 - 2.2 / 2002.2-TURBO CITRÖEN: BERLINGO/XM/XSARA/ZX PEUGEOT: 306/405/605/806/PARTNER 1 006 200 123, (1 006 200 018) Medidas: A: 9.9 - B: - - C: 12.0 - D: 86.0 - E: 13.0 - F: - - G: 23.5 - H: 70.0 - I: 10 - Z: 37



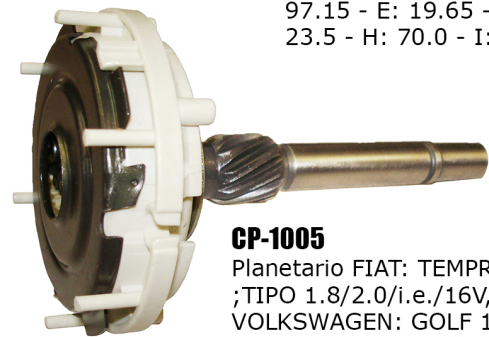
CP-1003

Planetario VOLKSWAGEN GOL/SAVEIRO/VOYAGE 9 000 081 006, 9 000 081 007 Medidas: A: 12.0 - B: - - C: 12.0 - D: 97.15 - E: 19.65 - F: - - G: 23.5 - H: 70.0 - I: 10 - Z: 37



CP-1004

Planetario FIAT TEMPRA 2.0/MPI/SPI/8V/16V/TURBO, PALIO 1.6 16V ; PALIO WEEKEND 1.6 16V/TEMPRA TURBO 2.0 MPi 8V 9 000 081 005, 9 000 081 008, F 000 AL0 100 Medidas: A: 12.0 - B: - - C: 12.0 - D: 94.95 - E: 20.8 - F: - - G: 23.5 - H:



CP-1005

Planetario FIAT: TEMPRA 2.0 ; TIPO 1.8/2.0/i.e./16V, VOLKSWAGEN: GOLF 1.8/III 1.8 E III 1.8 ; PASSAT (IMPORT) 2.0, AUDI: A3 1.8/1.8T, SEAT: ALHAMBRA ; CITY GOLF ; CORDOBA ; IBIZA F 000 AL0 128, 0 001 107 007, 0 001 107 008, 0 001 Medidas: A: 10.0 - B: - - C: 12.0 - D: 92.5 - E: 18.8 - F:



CP-1006

Planetario NISSAN MEXICANO 9 008 046 015 Medidas: A: 10.0 - B: - - C: 12.0 - D: 81.2 - E: 15.4 - F: - - G: 23.0 - H: 70.0 - I: 10 - Z: 36



CP-1007

Planetario RENAULT: LAGUNA 2.0 i 16V 0 001 106 017 Medidas: A: 9.9 - B: - - C: 12.0 - D: 85.8 - E: 13.5 - F: - - G: 23.0 - H: 70.0 - I: 10 - Z: 36



PLANETARIOS-REDUCTORES



CP-1008

Planetario AGRALE: OMNIBUS VOLARE, CHEVROLET-GM: BLAZER DLX ; PICK-UP S10, PICK-UP D20 ; SILVERADO, CUMMINS, F-100, RANGER, JOHN DEERE, MERCEDES-BENZ: 180D; OMNIBUS ; CAMIONES, SPRINTER, PERKINS, PEUGEOT: 504, 505, VOLKSWAGEN 352 58 580, 352 58 940, 352 58 950, 352 58 490, 35 Me-



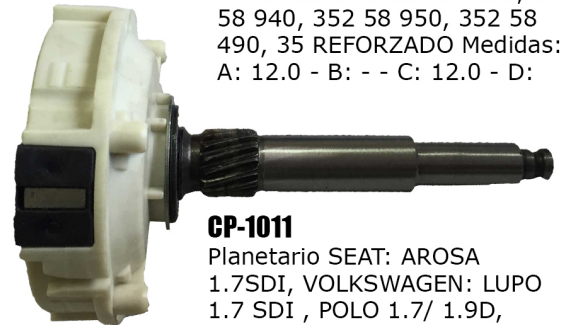
CP-1009

Planetario AGRALE: OMNIBUS VOLARE, CHEVROLET-GM: BLAZER DLX ; PICK-UP S10, PICK-UP D20 ; SILVERADO, CUMMINS, F-100, RANGER, JOHN DEERE, MERCEDES-BENZ: 180D; OMNIBUS ; CAMIONES, SPRINTER, PERKINS, PEUGEOT: 504, 505, VOLKSWAGEN 352 58 580, 352 58 940, 352 58 950, 352 58 490, 35 REFORZADO Medidas: A: 12.0 - B: - - C: 12.0 - D: -



CP-1010

Planetario ALFA ROMEO, AUDI, CITROEN, LANCIA, OPEL, PEUGEOT, RENAULT, SEAT, VAUXHALL, VOLKSWAGEN. 0 001 107 056 (12V), 0 001 107 100, 0 001 107 101 Medidas: A: 12.0 - B: - - C: -



CP-1011

Planetario SEAT: AROSA 1.7SDI, VOLKSWAGEN: LUPO 1.7 SDI , POLO 1.7/ 1.9D, BORA 2.3 V5 (1998-2005), BORA 2.3 V5 4 MOTION (1998-2005), GOLF III 2.8 VR6 (1992-1997), GOLF IV 2.3 V5



CP-1012

Planetario VOLKSWAGEN: LT 2.5 TD (99-), LT 2.5 TD 4X4 (85-01) 0 001 125 501, 0 001 125 502 Medidas: A: 7.90 - B: 10.9 - C: 14.2 - D: 81.1 - E: 8.3 - F: 32.9 - G: 27.0 - H: 74.0 - I: 16 - Z: 38



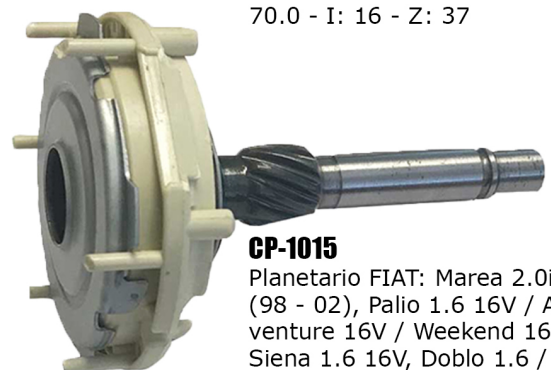
CP-1013

Planetario VOLKSWAGEN: GOL, 1.8/2.0 MI, QUANTUM 1.8/2.0 MI , SAVEIRO III 1.6/1.8/2.0MI F 000 ALO 502, F 000 ALO 507 Medidas: A: 7.90 - B: 10.9 - C: 14.2 - D: 80.9 - E: 7.4 - F: 32.0 - G: 23.0 - H: 70.0 - I: 16 - Z: 37



CP-1014

Planetario FIAT: Brava, Ducato, Marea, Ulysse, Ulysse, FORD: C-Max, B-Max, Fiesta, Focus Courier, Ecosport, Grand C-Max, Mondeo, FORD AUSTRALIA: Fiesta, MAZDA: 121, VOLVO: C30, S40, V50, CITROEN: Berlingo, Evasion, Xantia, Xsara, PEUGEOT: 205, 306, 405, 605, 806, Partner 0 001 107 043, 0 001 107 063, 0 001 107 066, 0 001

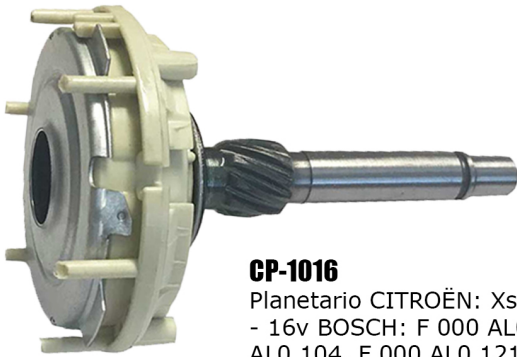


CP-1015

Planetario FIAT: Marea 2.0i 20V (98 - 02), Palio 1.6 16V / Adventure 16V / Weekend 16V, Siena 1.6 16V, Doblo 1.6 / Cargo 1.6 16V, 16V, Strada 1.6, Brava 1.6, Brava 1.6 / 1.6 16V, multipla 1.6 16V, Stilo 1.6 16V, Petra 1.6 16V, Albea 1.6 16V, Capagnola 1.6 16V, LANCIA: Lybra 1.6 16V 0 001 107 091, 0 001 107 110, 0 001 107 066, 0 986 Medidas: A: 10.0 - B: - -



PLANETARIOS-REDUCTORES



CP-1016

Planetario CITROËN: Xsara Picasso 2.0 - 16v BOSCH: F 000 AL0 101, F 000 AL0 104, F 000 AL0 121 Medidas:A: 10.0 - B: - - C: 12.0 - D: 82.3 - E: 13.0 - F: - - G: 25.2 - H: 70.0 - I: 10 - Z: 36



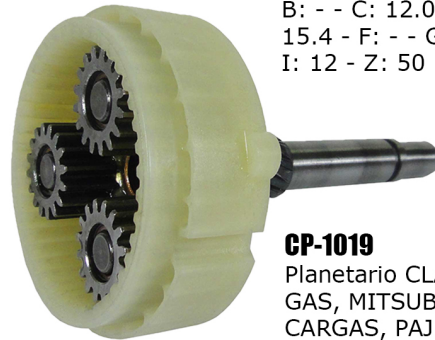
CP-1017

Planetario CHEVROLET-GM: AS-TRA/BLAZER/S10/VECTRA - II(SOHC) 1.8/2.0/2.2 - 8V HASTA 03/2001 9000846, 9000794, QDJ1236, 9675379880 Medidas: A 12.0 - B: - - C: 12.0 - D: 76.9 - E: 15.4 - F: - - G: 29.0 - H: 59.5 - I: 12 - Z: 50



CP-1018

Planetario MAZDA: FP13-18-X56 - MXSMIATA, PROTEGE, MPV; CHEVROLET: S-10, OMNIBUS Volare; NISSAN MOT0081, 80381, 80881, 80981, 81081



CP-1019

Planetario CLARK: MONTACARGAS, MITSUBISHI : MONTACARGAS, PAJERO V6 GAS. M001T79781, MITSUBISHI: M001T74287Z Medidas: A: 9.9 - B: - - C: 9.9 - D: 76.8 - E: 15.2 - F: - - G: 30.5 - H:



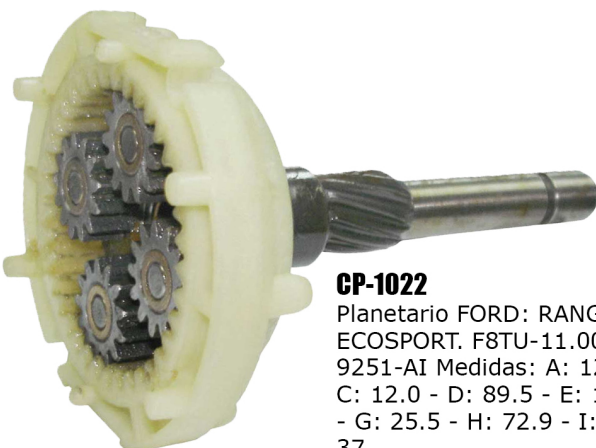
CP-1020

Planetario HYSTER: MONTACARGAS, RENAULT Medidas: A: 9.9 - B: - - C: 12.0 - D: 78.8 - E: 14.0 - F: - - G: 30.4 - H: 65.0 - I: 8 - Z: 42



CP-1021

Planetario MERCEDES BENZ: C180/TModel/200/220/230; CLK230 K.P.; E230; ML230; SLK230 K.R.; 124-200E, CHRYSLER: DODGE DAKOTA2.5 D; GRAND CARAVAN 2.5, VOYAGER 2.5/3.3/3.6 0 001 108 123, 0 001 108 124, 0 001 108 134, 0 001 Medidas: A 10.0 - B: - - C: 10.9 - D: 95.1 - E:



CP-1022

Planetario FORD: RANGER, ECOSPORT. F8TU-11.000 DD 9251-AI Medidas: A: 12.0 - B: - - C: 12.0 - D: 89.5 - E: 14.4 - F: - - G: 25.5 - H: 72.9 - I: 12 - Z: 37

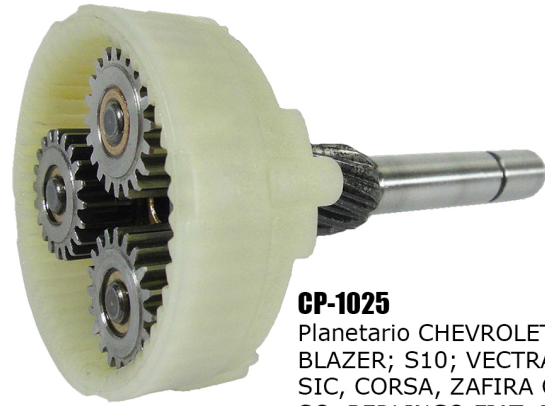
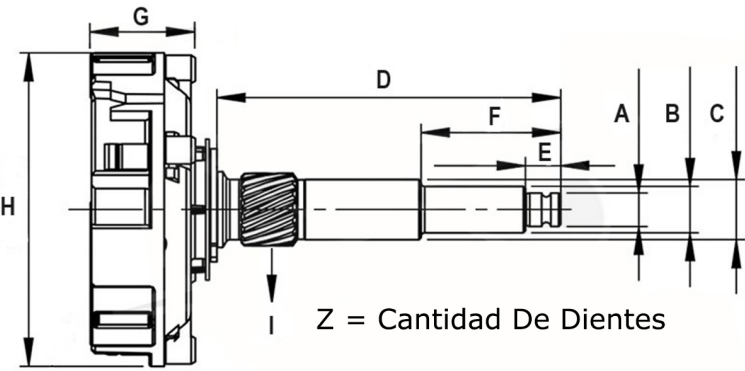


CP-1023

Planetario Ford: F-1000 (gas.), F-4000 4.9 l, F150. F2-TUAA7C27A, F2TU11000AA Medidas: A: 12.0 - B: - - C: 12.0 - D: 81.2 - E: 17.6 - F: - - G: 25.5 - H: 72.9 - I: 12 - Z: 37



PLANETARIOS-REDUCTORES



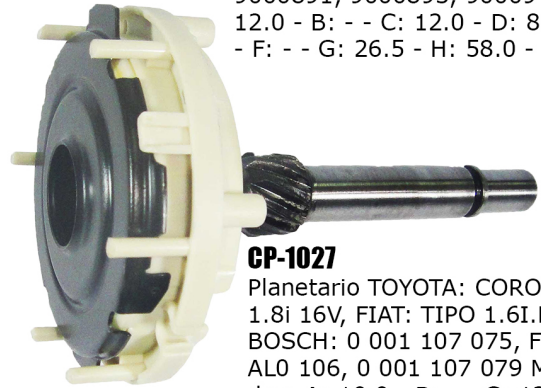
CP-1025

Planetario CHEVROLET-GM: ASTRA; BLAZER; S10; VECTRA, CORSA CLASSIC, CORSA, ZAFIRA CITROEN: PICASSO, BERLINGO FIAT: PALIO, SIENA, IDEA, DOBLO PEUGEOT: 206, 307, PARTNER PG260B, 9000981P, 9000890, 9000891, 9000893, 90009 Medidas: A: 12.0 - B: - - C: 12.0 - D: 80.7 - E: 16.0 - F: - - G: 26.5 - H: 58.0 - I: 12 - Z: 50



CP-1026

Planetario Chevrolet: Omega GLS 95>98, Omega CD 6cc 4.1 mpfi, Suprema CD 6cc 4.1 mpfi 10455711 Medidas: A: 10.6 - B: - - C: 10.6 - D: 73.0 - E: 3.5 - F: - - G: 30.75 - H: 64.9 - I: 8 - Z: 43



CP-1027

Planetario TOYOTA: COROLLA 1.8i 16V, FIAT: TIPO 1.6I.E BOSCH: 0 001 107 075, F 000 AL0 106, 0 001 107 079 Medidas: A: 10.0 - B: - - C: 12.0 - D: 81.2 - E: 15.4 - F: - - G: 28.0 - H: 70.0 - I: 10 - Z: 36



CP-1028

Planetario CHEVROLET-GM, RE-NAULT, PEUGEOT, CITRÖEN, SATURN, FIAT D6RA85, D6RA185 Medidas: A: 12.0 - B: - - C: 12.0 - D: 82.6 - E: 16.5 - F: - - G: 25.2 - H: 79.8 - I: 10 - Z: 37



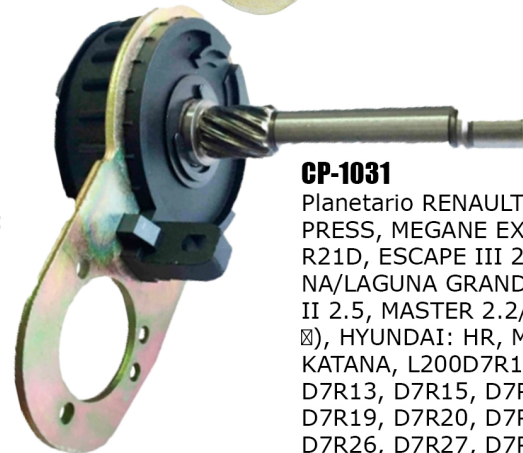
CP-1029

Planetario CHEVROLET-GM, RE-NAULT, PEUGEOT, CITRÖEN, SATURN D6RA65, D6RA165 Medidas: A: 12.0 - B: - - C: 12.0 - D: 82.6 - E: 16.5 - F: - - G: 25.2 - H: 79.8 - I: 10 - Z: 59



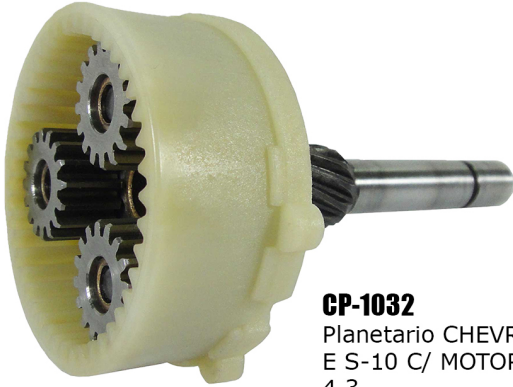
CP-1030

Planetario AUDI: A3, CITROEN: XSARA, BERLINGO, PEUGEOT: 106, 206, 405, PARTNER, VOLVO: 400TD, 440 TD, 460 TD, SUZUKI: GRAND VITARA, VOLKSWAGEN: BEETLE, BORA, GOLF MK4 D7R11, D7R12, D7R13, D7R15, D7R151, D7R16, D7R18, D7R19, D7R20, D7R24, D7R25, D7R26, D7R27, D7R28, D7R33, D7R34, D7R35, D7R53 Medidas: A: 10.0 - B: - - C: 12.0 - D: 86.8 - E: 17.5 - F: - - G: 28.2 - H: 75.8 - I: 10 - Z: 56



CP-1031

Planetario RENAULT: CLIO EXPRESS, MEGANE EXPRESS, R19D, R21D, ESCAPE III 2.2, LAGUNA/LAGUNA GRANDTOUR, TRAFIC II 2.5, MASTER 2.2/2.5 CDI (2010 Ø), HYUNDAI: HR, MITSUBISHI: KATANA, L200D7R11, D7R12, D7R13, D7R15, D7R16, D7R18, D7R19, D7R20, D7R24, D7R25, D7R26, D7R27, D7R28, D7R33, D7R34, D7R35, D7R43, D7R53, D7GR53 Medidas: A: 10.0 - B: - - C: 12.0 - D: 86.8 - E: 17.5 - F: - - G: 28.4 - H: 75.8 - I: 9 - Z: 56



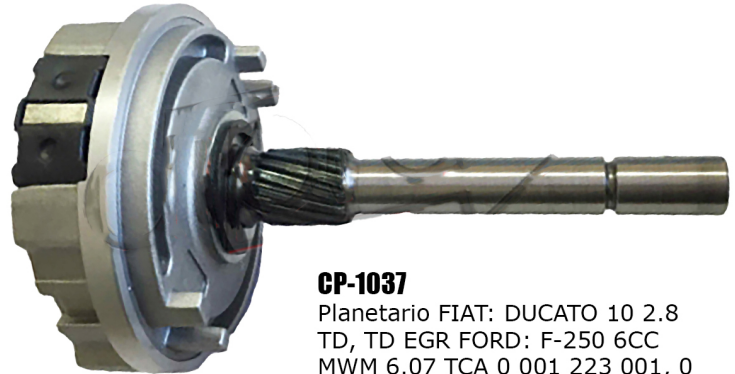
CP-1032
Planetary CHEVROLET: BLAZER
E S-10 C/ MOTOR VORTEC V6
4.3
10492410



CP-1033
Planetary Chevrolet -GM, Clark
10475626



CP-1034
Planetary FORD: Courier 1.3i,
Fiesta 1.0i, Fiesta 1.3i, Ka 1.0i, Ka
1.3i modelos (96-99) Medidas: A:
10.0 - B: - - C: 11.9 - D: 81.2 - E:
15.4 - F: - - G: 24.5 - H: 70.0 - I:
10 - Z: 36



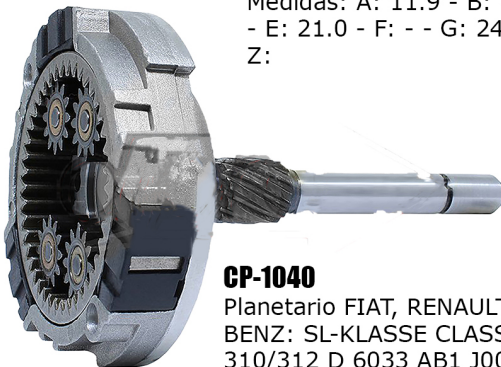
CP-1037
Planetary FIAT: DUCATO 10 2.8
TD, TD EGR FORD: F-250 6CC
MWM 6.07 TCA 0 001 223 001, 0
001 223 009, 0 001 223 010, 0
001 Medidas: A: 12.0 - B: - - C:
12.0 - D: 99.7 - E: 21.0 - F: - - G:
26.9 - H: 79.4 - I: 16 - Z: 40



CP-1038
Planetary FORD: ESCORT 1.8I ZETEC, 16V
ZETEC, MONDEO 1.8I, 2.0 I, 2.0 I, FOCUS
1.8 I 16V, 2.0, 2.0 16V 0 001 107 016,
0001107014, FORD: 93BB11000CA, 93BB
Medidas: A: 11.9 - B: - - C: 11.9 - D: 97.9
- E: 21.0 - F: - - G: 24.0 - H: 70.0 - I: 10 -
Z:



CP-1039
Planetary CHEVROLET: ASTRA 2.0I,
VECTRA 2.0 16V, ZAFIRA 2.0 SFI
16V 0 001 107 045, 0 001 107 017,
0 001 107 018, 0 001 Medidas: A
12.0 - B: - - C: 12.0 - D: 92.5 - E:
21.5 - F: - - G: 25.0 - H: 70.0 - I:
10 - Z: 37



CP-1040
Planetary FIAT, RENAULT, MERCEDES
BENZ: SL-KLASSE CLASSE SL, S, SPRINTER
310/312 D 6033 AB1 J00, 0 001 218 138,
0 001 218 140, 9 003 Medidas: A: 12.0 -
B: - - C: 12.0 - D: 103.7 - E: 20.5 - F: - -
G: 20.3 - H: 85.9 - I: 10 - Z: 42

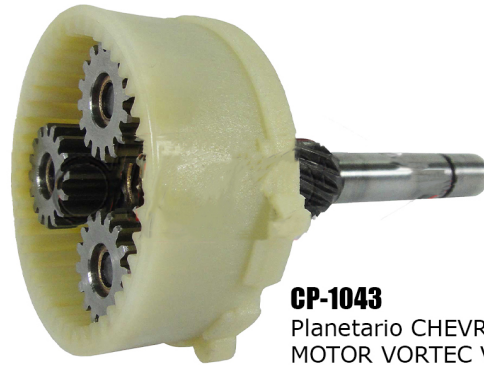


CP-1041
Planetary LAND ROVER, IVECO: DAILY 10
(MOTOR 8140), DODGE: DAKOTA 2.5D
(MOTOR MAGNUM 2.5 L-4), FORD: F-1000,
F-1000 HSD, CHEVROLET: BLAZER 2.5
DIESEL (MOTOR 4A), RENAULT: JUMPER 0
001 218 011, 0 001 218 122, 0 001 218
159, 0 001 Medidas: A: 12.0 - B: - - C:
12.0 - D: 103.9 - E: 20.4 - F: - - G: 30.0 -
H: 85.9 - I: 10 - Z: 42



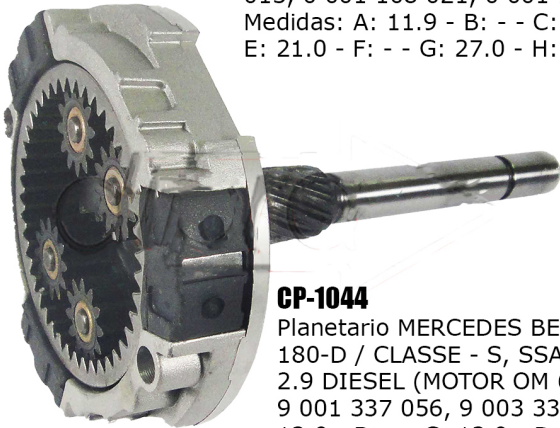
CP-1042

Planetario ALFA ROMEO: 156, 164, 166
 AUDI: 100 1.6, CHRYSLER: GRAND CARAVAN, JEEP, CHEROKEE, FIAT: TEMPRA, LAND ROVER: DEFENDER, DISCOVERY, RANGE ROVER, VOLKSWAGEN: GOLF 1.8, PASSAT 2.0, CHEVROLET: SUPREMA, OPEL 0 001 108 013, 0 001 108 021, 0 001 108 022, 0 001
 Medidas: A: 11.9 - B: - - C: 11.9 - D: 97.9 - E: 21.0 - F: - - G: 27.0 - H: 68.8 - I: 10 - Z:



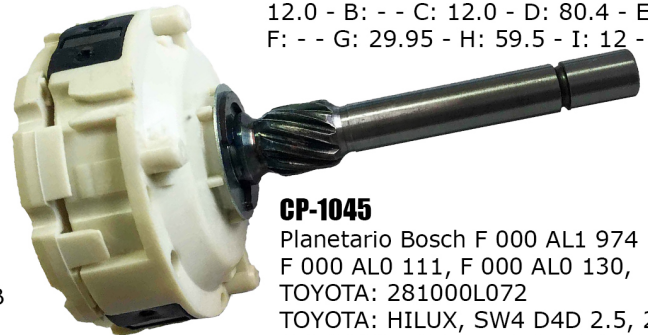
CP-1043

Planetario CHEVROLET: BLAZER C/ MOTOR VORTEC V6 4.3, S-10 C/ MOTOR VORTEC V6 4.3, SILVERADO 6.0 V8 C/ MOTOR VORTEX, CLARK: AUTOELEVADORES, HYSTER: AUTOELEVADORES, YALE: AUTOELEVADORES, ARRANQUE PG260-G/D 8000014, 9000 890, 9000871, DELCO: 8000000, 800001 Medidas: A: 12.0 - B: - - C: 12.0 - D: 80.4 - E: 16.1 - F: - - G: 29.95 - H: 59.5 - I: 12 - Z: 43



CP-1044

Planetario MERCEDES BENZ MB 100-D / MB 180-D / CLASSE - S, SSANGYONG MUSSO 2.9 DIESEL (MOTOR OM 662 D29) 07-1993> 9 001 337 056, 9 003 336 268 Medidas: A: 12.0 - B: - - C: 12.0 - D: 103.7 - E: 17.5 - F: - - G: 32.0 - H: 85.9 - I: 10 - Z: 42



CP-1045

Planetario Bosch F 000 AL1 974 F 000 AL0 111, F 000 AL0 130, TOYOTA: 281000L072 TOYOTA: HILUX, SW4 D4D 2.5, 2.8, 3.0 DIESEL (2006->) A: 12.0 - B: - - C: 12.0 - D: 94.7 - E: 16.4 - F: - - G: 27.0 - H: 73.7 - I: 10 - Z: 37



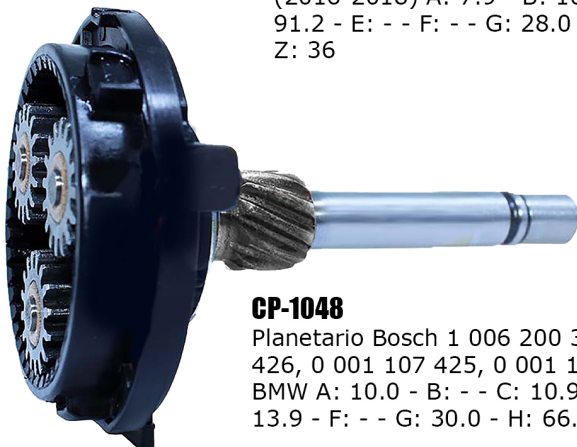
CP-1046

Planetario Bosch 1 006 200 588, 0 001 124 028, 0 001 124 029, 0 001 125 625, 0 001 125 626 TOYOTA HILUX 2.8 / 3.0 D. SW4 D. (2016-2018) A: 7.9 - B: 10.9 - C: 14.2 - D: 91.2 - E: - - F: - - G: 28.0 - H: 74.0 - I: 16 Z: 36



CP-1047

Planetario Bosch 1 006 200 369 F 000 AL0 901, F 000 AL0 903 ALFA ROMEO / FIAT / LANCIA / SUZUKI / JEEP / MERCEDES BENZ A: 10.0 - B: - - C: 10.9 - D: 79.3 - E: 13.8 - F: - - G: 23.0 - H: 65.9 - I: 10 - Z: 37



CP-1048

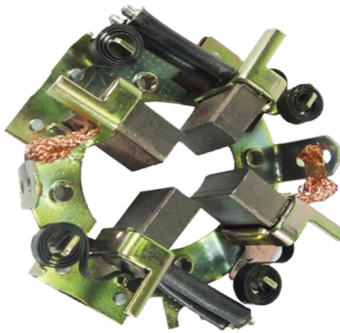
Planetario Bosch 1 006 200 327, 0 001 107 426, 0 001 107 425, 0 001 107 442, 0 001 BMW A: 10.0 - B: - - C: 10.9 - D: 79.4 - E: 13.9 - F: - - G: 30.0 - H: 66.0 - I: 10 - Z: 42



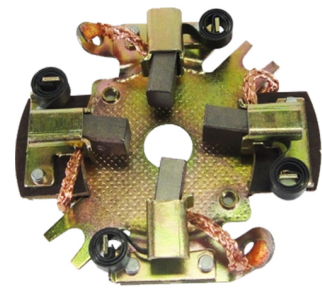
PORTACARBONES DE ARRANQUE



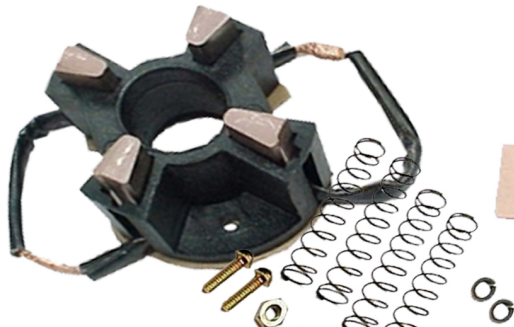
PCB-01 S/Carb.
PCB-01-1 C/Carb.
Camion Ford Arr. MWM
Cod 246.007 EX-213-13
Fijacion:



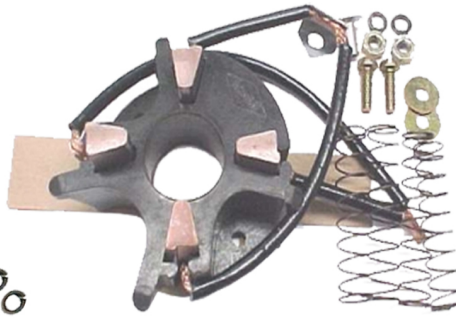
PCB-02 S/Carb
PCB-02-1 C/Carb.
M. Benz Arranque JF
Cod. 9001083392 BSX-433
Fijacion : 58



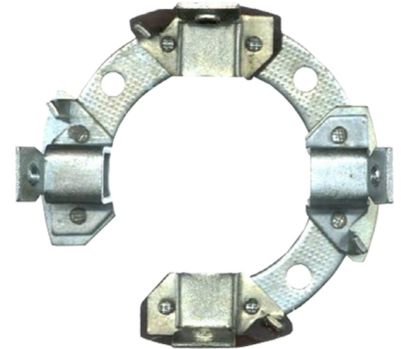
PCB-03 C/Carb.
Fiat 147 Duna Uno Ford
Escort GM VW Gold Senda
Cód. 9001082239 BSX-75
Fijacion : 46



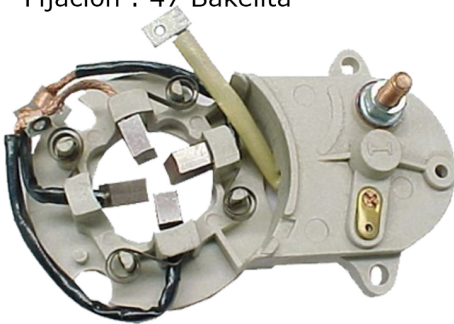
PCB-04 S/Carb.
PCB-04-1 C/Carb.
Frontal Indiel G Ford Taunus
F-100 Torino Fiat LASX-43-44
Fijacion : 47 Bakelita



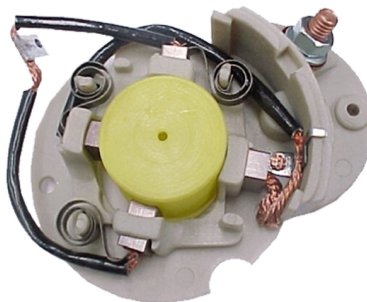
PCB-05 S/Carb.
PCB-05-1 C/Carb.
Frontal Indiel Ford Sierra R11 VW
Renault 11 Chico LASX-40-41
Fijacion : 43 Bakelita



PCB-06 S/Carb.
PCB-06-1 C/Carb.
M/Benz BNG Ancho
ASX 35



PCB-07 C/Carb.
VW/Dodge 1.500 Gacel
Arranque Tria



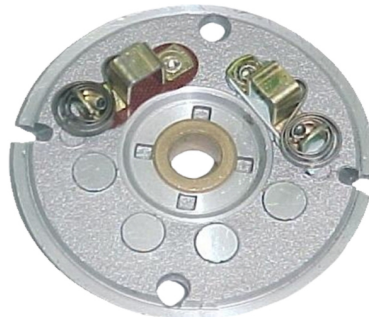
PCB-08 C/Carb.
VW/Dodge Polara y pick-up
Arranque Tria



PCB-09 C/Carb.
Fiat 147 Diésel-Duna
Arra. M. Marelli JSX-21-22
Fijacion : 39



PCB-10 S/Carb
PCB-10-1 C/Carb.
Frontal R-18 Peugeot 505 405
Paris Rhône PSX-131
Fijacion :40 Bakelita



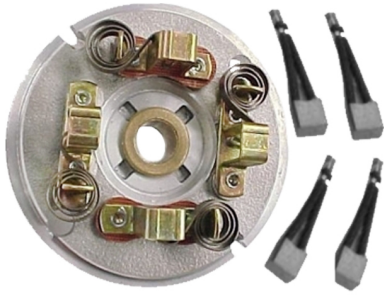
PCB-11 S/Carb.
PCB-11-1 C/Carb.
Renault 12 TS
Arranque Indiel USX-21-22



PCB-12 S/Carb.
PCB-12-1 C/Carb.
Peugeot 404-504 Fiat
Dodge Garef USX 21-22



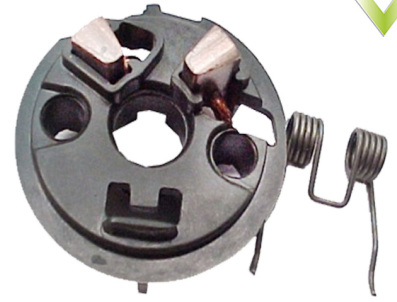
PORTACARBONES DE ARRANQUE



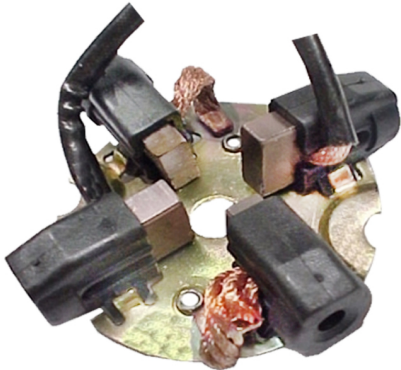
PCB-12-4 S/Carb.
PCB-12-4/1 C/Carb.
Peugeot 404-504 Fiat Dodge
Arranque Garef USX-21-22



PCB-13 S/Carb
Fiat 600 Arranque Garef



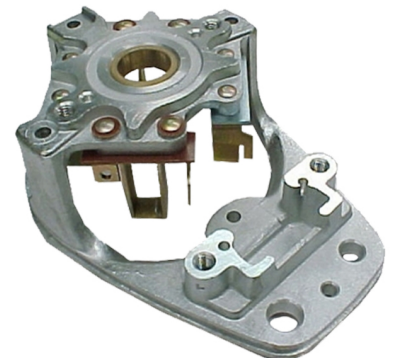
PCB-14 s/Carb
PCB-14/1 c/Carb.
Renault 19 D Arranque Valeo
Frontal Peugeot D6RA
PSX-148-149 Fijacion :38



PCB-15 C/Carb.
Magneti Marelli 85540341010
Fiat Ducato Tipo Uno Lancia
JSX 31-32



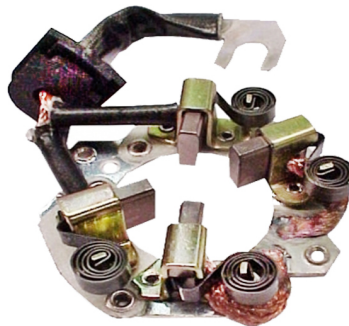
PCB-16 S/Carb.
PCB-16/1 C/Carb.
Renault Cerrada
Arranque Garef USX-21-22



PCB-17 S/Carb.
M/Benz Fiat Scania BPD
Arranque FKB BSX 60



PCB-18 C/Carb.
Renault Trafic Renault 19 D9R
Diesel Clio Expres Ford Currier
PSX-140-14 Valeo Fijacion : 71



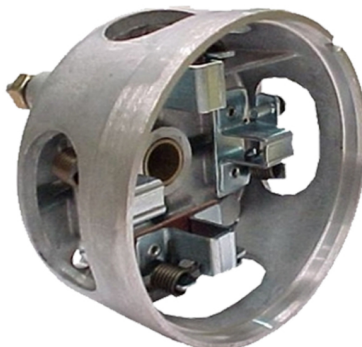
PCB-19/1 C/Carb.
Arr. Indiel Hitachi R-19 Duna Clio
Corsa Peugeot 205-306 405 Boxer
Fiat 147 Palio Siena Orig. 35258566
HISX 8128 Fijacion :56



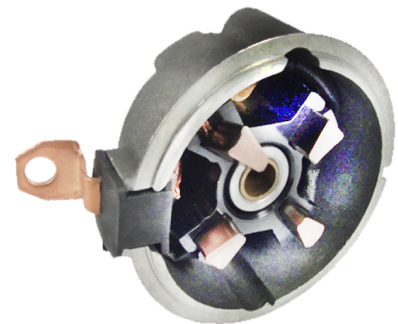
PCB-20 C/Carb.
Arranque Bosch Wapsa VW
Gol Ford Escort Orig 246012
X-213-2 Fijacion : 45



PCB-21 S/Carb.
PCB-21/1 C/Carb.
M/Benz Bosch Fiat Volvo Iveco VW
BSX-592 Ford Cargo Camiones
Orig 9001083569 Fijacion : 58



PCB-22 S/Carb.
PCB-22/1 C/Carb.
Arranque Indiel AN-115
Ford Chevrolet ASX-11



PCB-23 S/Carb.
PCB-23/1 C/Carb.
Arranque Indiel Frontal IKA
Taunus Volvo LASX-43-44



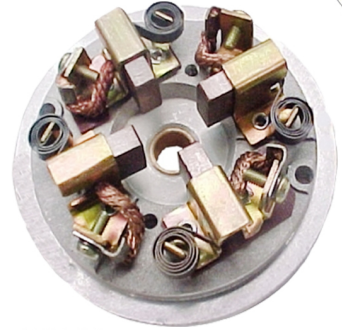
PORTACARBONES DE ARRANQUE



PCB-24 S/Carb.
PCB-24/1 c/Carb.
Arranque Indiel Frontal Sierra
RenaultR-9-11 .LASX-40-41



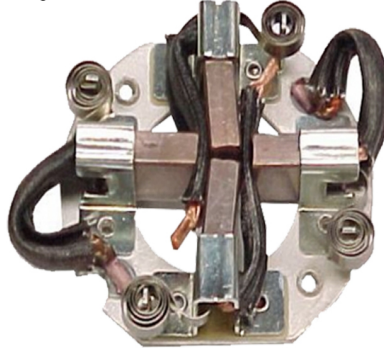
PCB-25 C/Carb.
Arranque Fiat Duna 147 Spacio
R-11-12-18-19-21 Trafic Nafta
Margneti Marelli PSX-35-36
Fijacion : 45



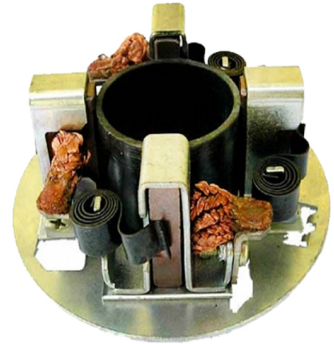
PCB-26 C/Carb.
Arranque Wapsa Volkswagen
Senda Saveiro Gol Diesel
Carb. 213/5



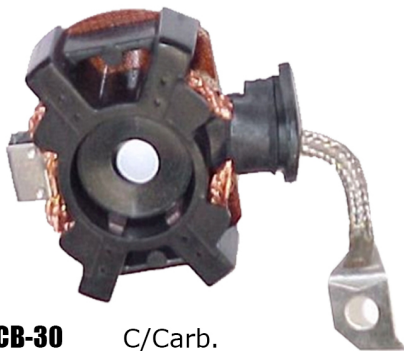
PCB-27 C/Carb.
Valeo Peugeot 205-405-206-306
Boxer R-19 Expres Clio Diesel D7R
PSX-150-151 Fijacion : 67



PCB-28 C/Carb.
Arranque Indiel Motor Maxion
Ford F-100 Diesel Ford Cargo
LASX 15-27 M50R Fijacion : 73



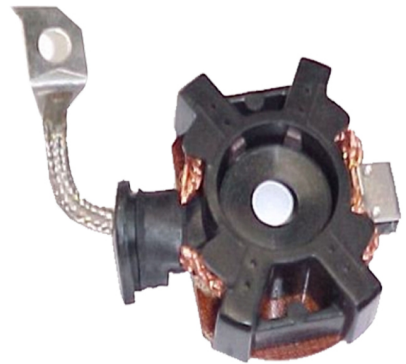
PCB-29 C/Carb.
Arranque Bosch M-Benz Super
Torque Camion VW Cummins
FordCargo 9001453640



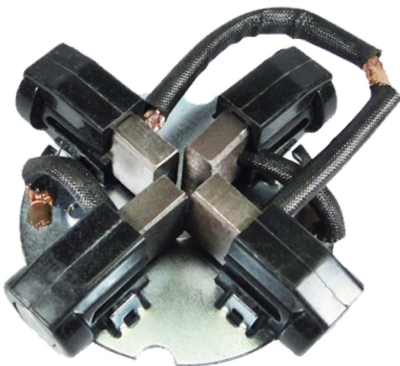
PCB-30 C/Carb.
Arran. Motorcraf Ford Ranger
90-93 F-250 Mondeo Explorer
Escort (Bakelita) FX-217



PCB-31 C/Carb.
Mitsubishi Mazda



PCB-32 C/Carb.
Motorcraf Ford Escort F-100
Fiesta Ford K Bakelita FX-217



PCB-33 C/Carb.
Indiel Motor Maxion Ford M93R
Peugeot 504 505 DF-100 Ranger
JSX-31-32 Fijacion : 46



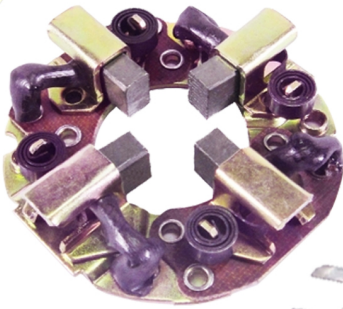
PCB-34 C/Carb.
Arran. Motorcraf Ford F-100
Transit Currier FX-340
Fijacion : 60



PCB-35 C/Carb.
Hitachi Honda Subaru Isuzu
Nissan Pathfinder HISX-81-32



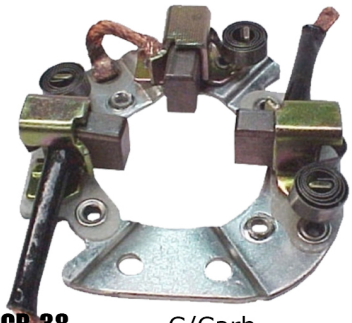
PORTACARBONES DE ARRANQUE



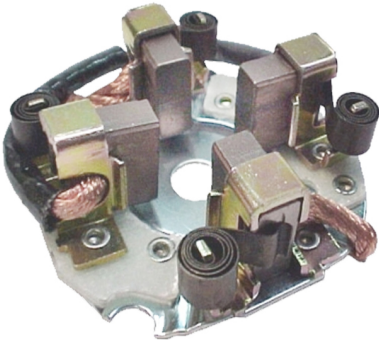
PCB-36 C/Carb.
Mitsubishi Isuzu Chevrolet Corsa
Nissan Subaru Audi Toyota Ford
FJSX-190 Fijacion : 64 (241)



PCB-37 C/Carb.
Arranque Mitsuba Honda
Civic Prelude Acord FJSX-83-12
Fijacion : 47 (118)



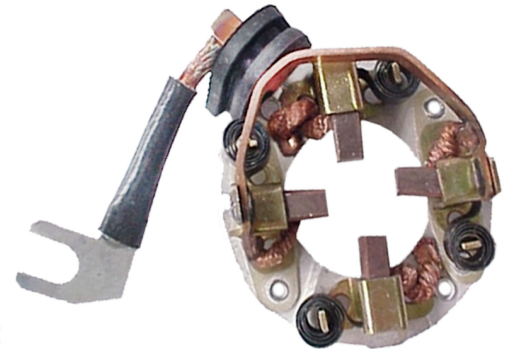
PCB-38 C/Carb.
Marelli Fiat Palio Siena Uno Nafta
JSX-35-36 Orig83224461
Fijacion : 45 (34.34)



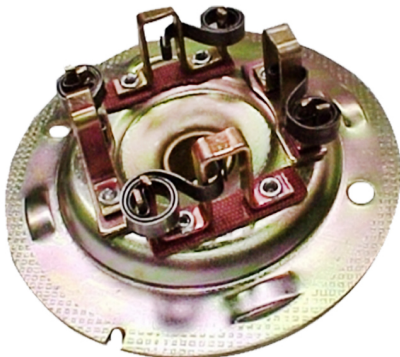
PCB-39 C/Carb.
M. Marelli Ducato Tipo Uno
Citroen Berlingo JSX-31-32
Fijacion : 46 (020)



PCB-40 C/Carb.
Arran. M-Marelli Fiat Palio
Siena Diesel



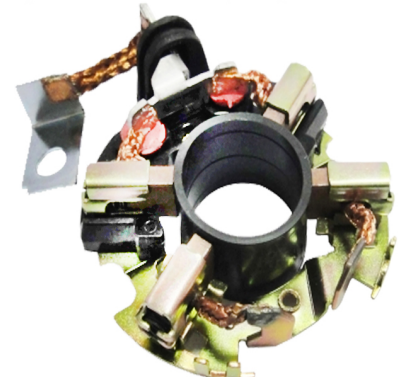
PCB-41 C/Carb.
Motorcraf Ford Ka Fiesta
Escort Transit FX -341.
Fijacion : 52 (341)



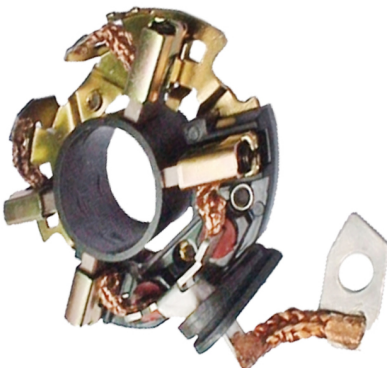
PCB-42
Arranque Indiel Ford Ika Rastro-
jero Indenor Chevrolet
(EX-16-56) 135256128 (16.56)



PCB-43 C/Carb.
Arran. Mitsubishi GM Corsa D
Chevrolet Astra Diesel FJSX 83-11
Fijacion : 57 (8311)



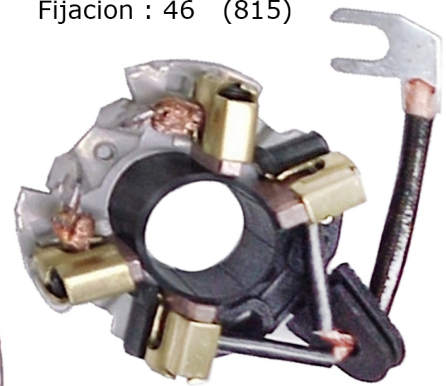
PCB-44 C/Carb. (C/C P/G)
Bosch Ford Escort Polo Gol Saveiro
Corsa Berlingo Peugeot 205 306 405
Partner BSX-161-162 Der 9001081094
Fijacion : 46 (815)



PCB-45 C/Carb. (C/C P/G)
Bosch VW Gol II III 16V 1000
1,3 1,6 Transporter Corsa 1,6
Izq. BSX-161-162 Fijacion :46



PCB-46 (C/M P/C)
Arranque Bosch Fiat Palio Tempra
Chevrolet Astra Corsa Clio Gol Der.
BSX-159-160 Fijacion :43 (812)



PCB-47 C/Carb.(C/G P/G)
Bosch Fiat Duna Uno Ford Escort
Clio D Expres Scenic DW1.7KW
BSX-157-158 Fijacion : 43 (956)



PORTACARBONES DE ARRANQUE



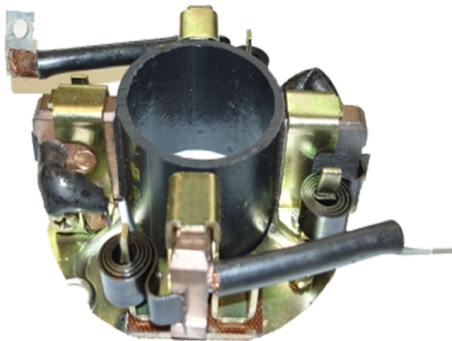
PCB-48 C/Carb. (C/C P/C)
 Bosch Escort Mondeo Berlingo
 Xatia Xsara Ducato Brava Marea
 Palio P-205-306-405-PartnerIbiza
 BSX-161-162C Fijacion : 43 (814)



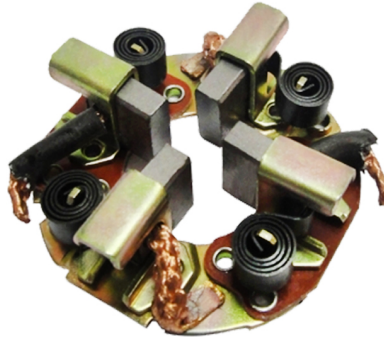
PCB-49 C/Carb.
 Bosch Motor Maxion Ford
 Mondeo Nissan BMW 9003334314
 BSX-165 Fijacion : 48 (918a)



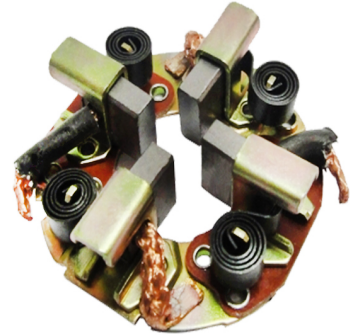
PCB-49/1 C/Carb.
 Bosch Motor Maxion camiones
 IVECO BSX-165 9003334341
 Fijacion : 48 (918)



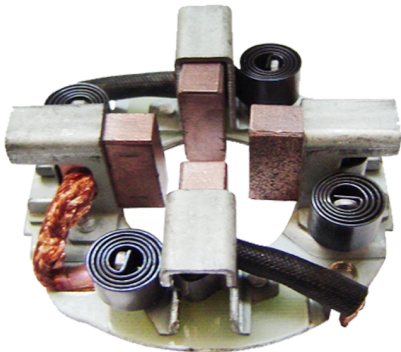
PCB-50 C/Carb. 10456456
 28MT Motor Cumins M-Benz
 Sprinter Bocat Ford Agrale
 (133) Fijacion : 68 (400c)



PCB-51 C/Carb. Mitsubishi
 L-200-300 Dodge Mazda
 Nissan Frontier 3.2 turbo
 M-649t05071-(144)



PCB-52 C/Carb.
 Nissan Frontier 3.2 Mitsubishi
 L-200 L3007X18X18,5
 ME700140(144)



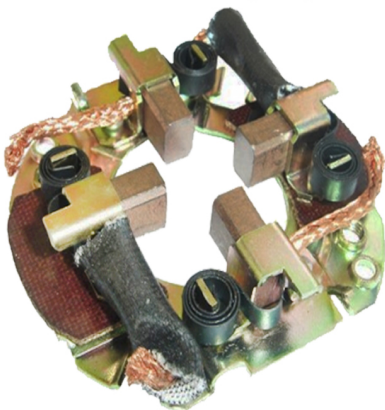
PCB-53 C/Carb.
 Mitsubishi Ford Van Diesel
 8X24X18 SBE-351(146)



PCB-54 C/Carb.
 DelcoRemyPG260MQ PMGR
 Chevrolet Blazer S10 Motor
 VortecV64,3L10475602(148)



PCB-55 C/Carb.
 DelcoRemy PG260D Chevrolet
 Corsa S10Motor SOHC2,0-2,2L
 ORIG10452368(149)



PCB-56 C/Carb.
 ArranqueMitsubishi Nissan
 Perkins Ford Dodge
 8X24X18 SBE-351(159)



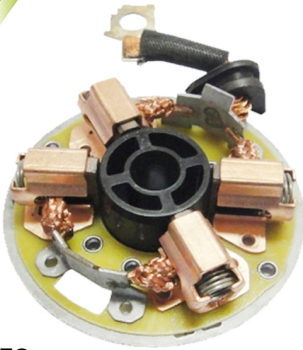
PCB-57 C/Carb.
 Arranque Nippondenso
 Dodge Isuzu Deutz Toyota
 028510-0500 (161)



PCB-58 C/Carb.
 BOSCH Iveco Daily Ford F250
 MWM ORIG6033AD0368 (162)



PORTACARBONES DE ARRANQUE



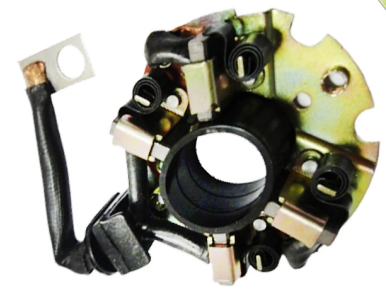
PCB-59

Arr. Bosch Ford 250 Cummins VW Iveco
M Benx Elec. ORIG6033AD0189 (164)
Scania bsx190-191 (190191)



PCB-60

Arr. ValeoTwingo VW Polo Golf
Peugeot 106-206-307 D7E4
Orig 594351-290 PSX 132 (152)



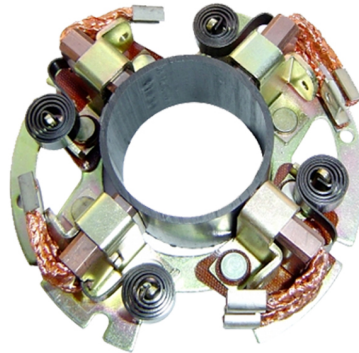
PCB-61

Mazda Hyundai Subaru Nissan
Autoel. Mitsubishi fjsx 83-12
Fijacion: 57 4.5x12x18 (8312)



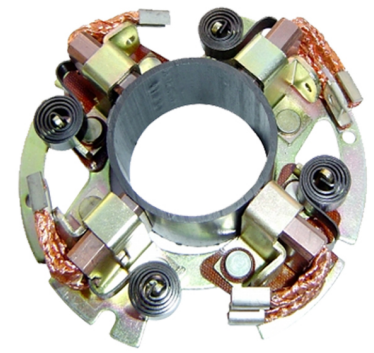
PCB-62

Mitsubishi Corsa Luv Isuzu Nissan
Pulsar Sentra Clark 7x12x17.5
Fijacion: 63 (2226-133-241)



PCB-63

Delco Remy Camion cargo MT37
Caterpillar Cummins Serie C
Fijacion: 118 (407-2320) Vol 12



PCB-64

Delco Remy 42 MT 79117-
Cummins M Benz Ford Cargo
Fijacion: 118 (2322-405)vol 12



PCB-65

Delco Remy Ford cargo VW
Cummins 37 MT 24 vol
Fijacion: 118 RX135 (407-2316)



PCB-66

Delco Remy Ford cargo VW
Cummins 42 MT 24vol
Fijacion: 118 (405-2323)



PCB-67

Mitsubishi Pmgr Peugeot 205
405D susuki Mazda subaru
Fijacion: 57 4.5x18x17
(8381-2258)



PCB-68

Reparacion para carbones M. Marelli
Indiel Maxion
Fiat Ducato c.resortes



PCB-69

Bosch Astra Blazer Ipanema Zafira
Vectra Opel Tempra Picasso Gol
Quantum Saveiro Santana Peugeot
Fijacion: 43 BSX161-162 5x12x12
9000081004-5-6-7-8 (814)



PCB-70

Bosch Astra 1.8 Blazer EFI 2.2
Ipanema 2.0 C10 Zafira 2.0 16V
Vectra 2.0 GSI 16V Palio 1,6 16V
Fijacion: 46 (119) BSX161-162
5x12x12 (815)



PORTACARBONES DE ARRANQUE



PCB-71

Bosch Cordoba 1,9D Ibisa
Passat 2,8 VR6 Golf 1.9 2.3 TDI
Audi A3 1,8T (127) (antihorario)
BSX-157-158 Fijacion:43 (953)
1004336800-847-884-906-926



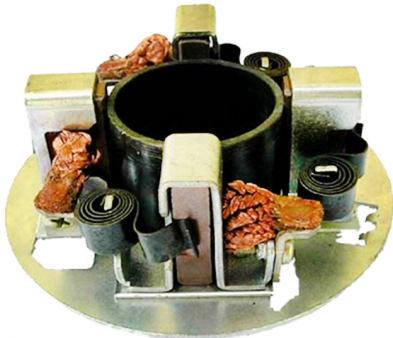
PCB-72

Bosch Peugeot Citroen Fiat Volvo
VW Ford Alfa Audi Chrysler BMW GM
Opel (antihorario) Fijacion : 43
BSX-159-160 (126) 5x16x13



PCB-73

Bosch Clio 1,0 1,6 Express Scenic
BSX-157-158 (sent Horario)
(128) (956) 1004336835-908-949
Fijacion : 43



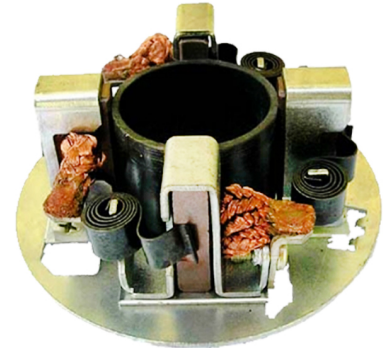
PCB-74

Bosch Scania 114 Y todos
SUPERTORQUE JE 2004336077
X213 24v 9x36x18 (136) (286)



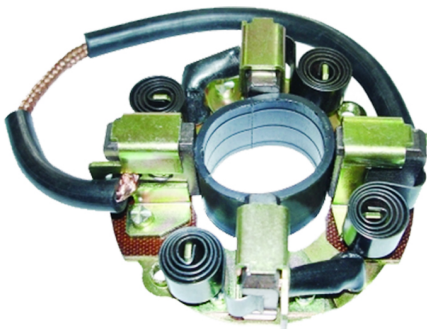
PCB-75

Motorcraft Currier Ranger F150
Explorer Transit F8U111434AA
(176) (204) FX217 4,5x16x16,2
Fijacion: 58



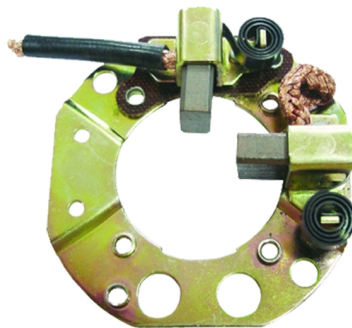
PCB-76

Bosch Scania 114 Y todos
SUPERTORQUE JE 901453640
X213 12v 9x36x18 (136) (280)



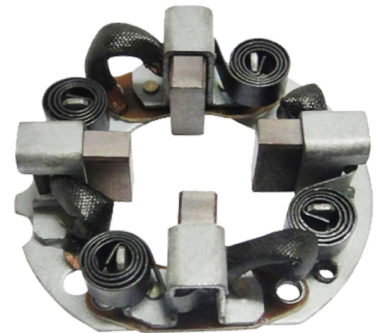
PCB-77 12v PCB-77-1 24v

M-100R Caterpilla Cummins
MWM Ford M Benz Dodge Ram
VW Navistar K1236-66
7.8x24.7x21 Fijacion: 58



PCB-78

M.Marelli (9945553)
Siena Palio Fiat Mill 1.0 8V
7x13x17.5 JSX 35-36



PCB-79

Nippondenso Motores de frio
Nissan Canter 7X19X15
Fijacion: 64 ()



PCB-80

Mippondenso Motores de
frio Honda Isusu Nissan
7x16x14



PCB-81 12v PCB-81-1 24v

Delco Remy. 50 MT. 6 campos
(RX-124) 8x38x21 Caterpillar
John Deere orig1984974



PCB-82 12v

PCB-82-1 24v

Delco Remy. 40 MT.4 campos
(RX122) 10x38x21 Caterpillar
John Deere orig1979185



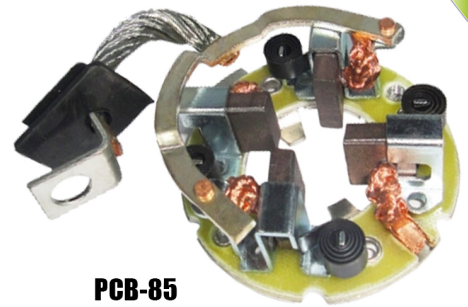
PORTACARBONES DE ARRANQUE



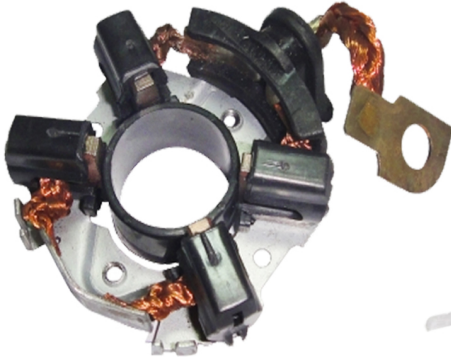
PCB-83
C/Carb.
Valeo
Peugeot 307-Partner



PCB-84
C/Carbones
Nissan/Isuzu/
Autoelevador Mitsubishi



PCB-85
C/Carbones
Delco Remy
Chevrolet Blazer



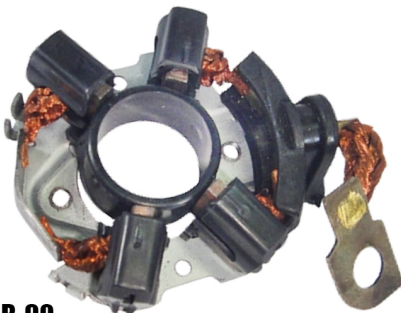
PCB-87
Portacarbon Bosch DW 1KW Der-Izq
Peugeot 206-306-307-407
Partner EXPERT Citroen Berlingo
Picasso-MBenz Carbon 5 x 16 x 13
Diam 67 Fijacion 43
ph 629-630pk776-775



PCB-88
Portacarbon Bosch
1,2 KW Der-Izq VW
audi Carbon 5 x 12 x 12
Diam 67 Fijacion 43,5
ph627-628



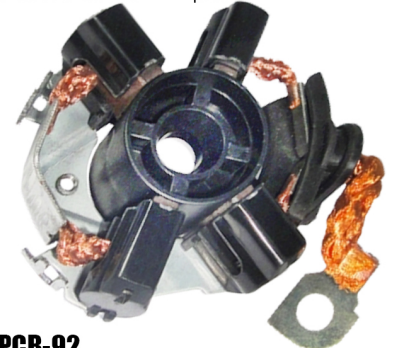
PCB-89
Portacarbon Bosch DW
1,6 KG Peugeot Partner
Citroen Berlingo Carbon
Diam T63 Fijacion 41
5 x 16 x 13 ph626



PCB-90
Portacarbon Bosch DM 8/9 1KW
1004337027-336957-879-842
Chevrolet Corsa Fiat Bravo Palio
Weekend Ford Mondeo VW
Carbon 5 x 12 x 12
Diam 69 Fija 46,3



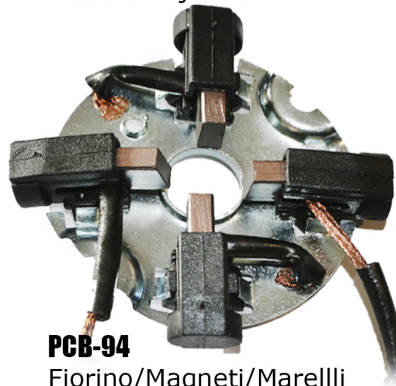
PCB-91
Portacarbon Bosch
Peugeot Citroen
Carbon 4,5 x 9 x 12
Diam 63 fijacion 41



PCB-92
C/Carbones
Bosch Fiat/Renault chico
Carb. 6 x 18 x 13
Diam-67-Fijacion :43



PCB-93
C/Carbones
Bosch Fiat /Renault grande
Carb. 6 x 18 x 13
Diam-67-Fijacion :43



PCB-94
Fiorino/Magneti/Marelli
MR93 MWM Sprinter S10
Blazer Ranger Peugeot 504
505 D Fijacion 46
JSX35-36 7x13x17.5



PCB-95
Portacarbon F0CD1020 Carb.
4,5 x 8,5 x 11 Renault
Bosch/Valeo Logan Magane
Senic Duster Sendero Fiat
Idea Punto Palio Idea Strada

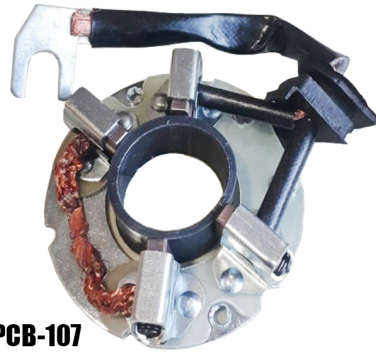


PORTACARBONES DE ARRANQUE



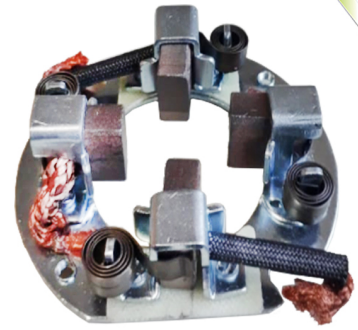
PCB-96

Portacarbon Bosch
FCD1203 -1285 Carb 4,5 x 8,5 x 11
Fiat Fiorino Doblo Palio Strada
Punto Bravo VW Gol Voyager



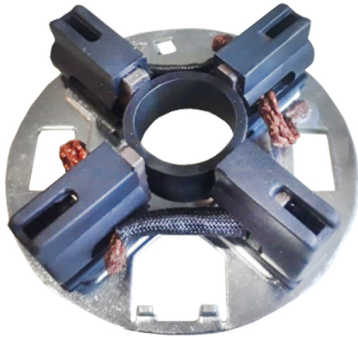
PCB-107

Portacarbon Escob 5x16x12
PG 260 Chevrolet Astra D.Remy
Blazer S10 Zafira (393-2267)
orig 10453748 Fijacion 58



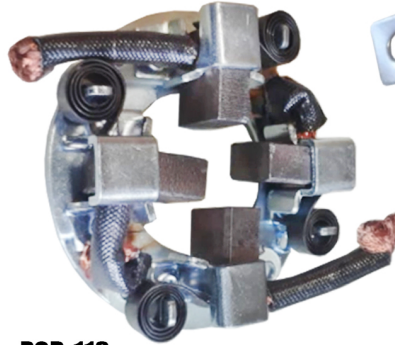
PCB-110

Portacarbon Escob.
Toyota F-100/Nipon
Denso (485)



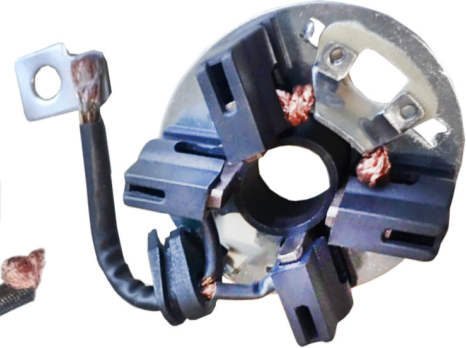
PCB-112

Portacarbon Escob M. Benz
Scania Fiat, Bosch Mod/Nuevo
(2144-161) BSX164 Electronico



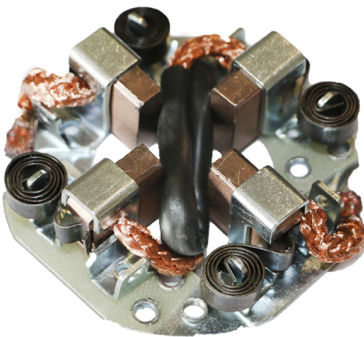
PCB-113

Portacarbon Escob.
Autoelev. M-78R
Indiel



PCB-115

Potacarbon Escob.
M/Benz Scania/Bosch P230 310
340 BSX162-163 5x27x18



PCB-116

Portacarbon Escob Mitsubishi
auto elevador Micros Camiones
8x24x20 (2353-412)
Fijacion 68 FJSX195



PCB-117

Portacarbon Escob Mitsubishi
auto elevador Micros Camiones
Toyota 8x25x20 (415-2355)
Fijacion 63 FJSX195



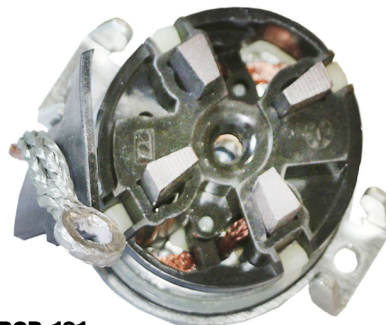
PCB-118

Portacarbon Escob Hitachi
auto elevador Komatsu Nissan
Daihatsu isuzu Toyota (196-2158)
FJSX195 8x25x21 Fijacion 71



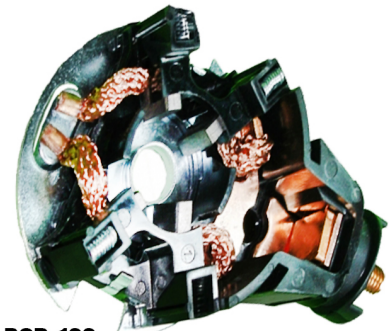
PCB-120

P-Escob. Valeo Peugeot
Citroen Antihorario



PCB-121

P-Escob. Valeo Citroen
Peugeot sentido horario

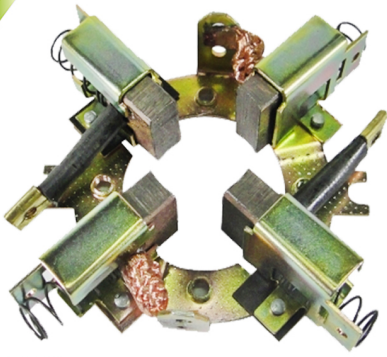


PCB-122

Acura: TSX 2.4L
Honda: Accord 2.4L/CR-V .4L
(1202-P2292C)Cod. Orig.
04312-PSA-305
31210-PSA-J51



PORTACARBONES DE ARRANQUE



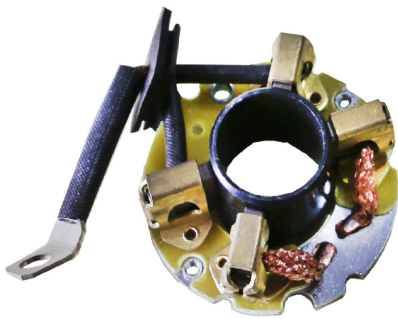
PCB-123
PORTA ESCOBILLAS ARRANQUE T.
BOSCH, M-BENZ Mod. NUEVO
24v 10 x 22 x 19 (9 001 083 596)



PCB-124
PORTA ESCOBILLAS ARRANQUE
Termo King 8.9 x 20 x 26



PCB-125
PORTA ESCOBILLAS ARRANQUE
Delco Chevrolet 5x15x12.5
giro derecho fijacion 48



PCB-126
PORTA ESCOBILLAS ARRANQUE
fijacion



AFF-17
Reparacion
Ika Ford Indiel



AN-31
Reparación
AN-115 Indiel



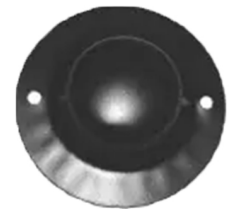
ATR-22
Reparación
Renault Peugeot Indiel



DV-021
Reparación Delco
Remy Bakelita



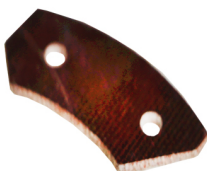
ATR-40
Aislante P/escob
Renault Indiel Nylon



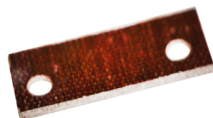
ATR-50
Tapa de arranque
Renault



ATR-40/1
Aislante P/escob
Renault Indiel Micarta



EJD-070
Aislante P/carb.
Rastrojero EJD Micarta



AN-31/1
Aislante P/escob
AN 115 Indiel Micarta



AFF-16
Aislante P/escob.
Ford IKA. Indiel Micarta



ANB-05
Tapa nashville



CARBONES DE ARRANQUE



ASX-11
AN-115 Indiel M/Benz
Perkins Peugeot
9x20x26 (PCB-22)



USX-21-22
Fiat Peugeot Dodge
Renault Arranque
Indiel 8x15x15



LASX-40-41
Ford Sierra Renault
11 VW Gasel Ford Escort
9,5/3,5x11,6x17



LASX-43-44
Ford Falcon Taurus
F100 Ika Torino
10,4/4,7x13,3x17,5



LASX-81-28
Renault 19 Escort
Orion Indiel M-74
4,5x13,8x16,8
(PCB-19/1)



JSX-31-32
MWM-Sprinter-S10
BlazerRanger
Peugeot 504 505D
8x18x19 (PCB-33)



EX-16-56
IKA FORD Chevrolet
Lucas Indenor
(8,8x19,2x12,5)
(PCB-24)



BSX-35
Arranque BNG Bosch
M/Benz 3500 Deutz
12x20x24 (PCB-06)



BSX-75
Fiat 147 Duna Uno
Tempra Chevette
Saveiro Escort
7x10x18 (PCB-03)



BSX-157-158
Fiat Duna 1,7 Diesel
Renault Express
Clio D Renault 19 D
6x18x13 (PCB-47)



BSX-159-160
Chevrolet Corsa Fiesta
Peugeot 205-306-405
Diesel
5x16x11,5 (PCB-46)



BSX-161-162
Ford Escort Mondeo
Polo Golf Peugeot 205
1KW 6x12x11,6
(PCB-45)



BSX-443
Mercedez Benz 2 cables
Arranque JF BOSCH
10X22X23,5 (PCB-02)



MASX-341
M-MARELLI
FIAT DUCATO
8x18x19 (PCB-15)



JSX-21-22
Peugeot Fiat 147 D
Fiat Duna
6x13x17,5 (PCB-09)



JSX-35-36
Fiat Duna Spacio
Rodeo Fuego
Nevada Vivace
7-13-17,5 (PCB-25)



PSX-131
Renault 18 Trafic
Diesel Peugeot 505
13,9x6,9x12x15
(PCB-10-1)



PSX-140-141
Renault Trafic Diesel
Peugeot 405-605
Diesel
9x18x22 (PCB-18)



SEGUROS DE BOBINA



CDA-01
Collar Ford Chevrolet
Renault-Peugeot
Eje 12 m-m



CDA-02
Collar Fiat 1500-1600
Garef Rastrojero
Bosch Eje 14 m-m



CDA-03
Collar Fiat 128
Peugeot Duna Garef
Eje 11,5 m-m



CDA-04
Collar Peugeot
Diesel Lig.Indiel
Eje 14 m-m



CDA-05
Collar Renault
Indiel Eje 12 mm



CDA-06
Collar R-11
Escor Indiel
Eje 11,85mm



CDA-07
Collar Comby
VW Indiel
Eje 10,98 mm



CDA-08
Collar Duna
Uno 147 Indiel
Eje 11,35 mm



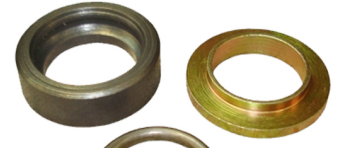
CDA-09
Collar M/Benz
Brasilero
Eje 14,2 mm



CDA-11
Collar AN 115 Indiel
M/Benz Nashville
Eje 15 mm



CDA-11/R
Collar AN 115 M100R
Reforzado Alto
Eje 15 mm



CDA-11/1
Collar AN 115
Con tapa
Eje 15 mm



CDA-12
Collar Sierra M-93
M-100 Ford VW
Indiel Eje 12 mm



CDA-14
Collar Paris Rhone
R-18 Mitsubishi
Eje 13 mm



CDA-15
Collar Renault
Trafic Eje 12 mm



CDA-16
Collar Renault
Alto Eje 12 mm



CDA-18
Collar Wapsa y
Motorcraf Ford
KA Eje 12 mm



CDA-19
Collar Delco
Remy 37 MT



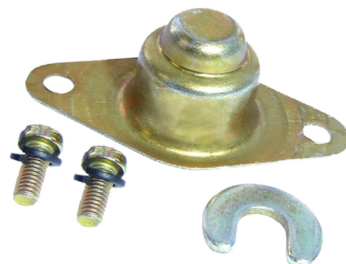
CDA-20
Collar Valeo Renault
Peugeot c/reduccion
Eje 8 mm

Foto

CDA-21
Seguro Valeo
Renault 19



CDA-22
Seguro Bosch
Duna 1.7 Diesel



CDA-23
Cubeta de seguro
Bosch Duna 1.7D



CDA-24
Seguro Bosch
Mediano



CDA-25
Cubeta de seguro
Mediano



SEGUROS DE BOBINA Y TUERCAS



CDA-26
Seguro Bosch
M-Benz



CDA-27
Cubeta de seguro
Bosch M/Benz Br.



CDA-28
Traba Arranque
Seguro Tria Polara



CDA-29
Traba Arranque
Indiel Hitachi



CDA-30
Traba HITACHI
Indiel M74DD



CDA-31
Collar VW Polo
Eje de 7,5 mm



CDA-32
Collar Valeo DR7D
DE7E
Eje de 11 mm



CDA-33
Segoro Tria U



CDA-34
Collar valeo
Logan Interior
10 mm



CDA-35
Collar Fiat Fire
eje 10 mm



CDA-36
Collar Bosch Brasil Deutz In-
terior 14.2 mm



CDA-37
Collar Lucas Marelli
eje 17 mm



CDA-38
Collar Mitsubishi
eje 19 mm



CDA-39
Collar Delco Remy 29 MT
eje 11 mm



ATR-33
Chaveta de (tuerca
punta de eje)



ATR-34
Tuerca de Bobina
Renault Peugeot



EJD-59
Tuercas de Bobina
EJD Rastrojero

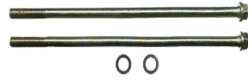


TORNILLOS LARGERO DE ARRANQUE



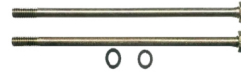
AFF-12

Tor. Frontal M100
Falcon F100
INDIEL
(M7 x 150 mm)



AFF-12/1

Tor. Frontal INDIEL
M100 Reanult Torino
(M7 x 170 mm c/e)



AFF-12/2

Tornillo Ika Ford
(W1/4 x 160mm c/e)



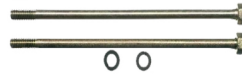
AFS-10

Tornillo M-93 VW
Peugeot Sierra NDIEL
(M5 x 125mm c/e)



AFS-22

Tornillo Motorcraf
Currier



AIF-05

Perkins Wapsa
(W1/4 x 170)



AN-24

Tornillo AN-115
Ford Largo
(W5/16 x 202 mm
c/e)



AN-25

Tornillo AN-115
Ford Corto INDIEL
(W5/16 x 182m c/e)



ANB-14

NASHVILLE
Esparrago
(M6 x 205 mm)



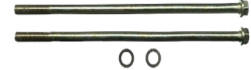
ATB-10

BOSCH Esparrago
(M6 x 212 mm)



ATR-36

Tornillo Renault ts
1400cc INDIEL
(M5 x 140 mm c/e)



ATR-36/1

Tornillo frontal
M-93 INDIEL
(M-6 x 140 mm c/e)



ATT-17

Tornillo TRIA
Dodge
(M6 x 140 mm c/e)



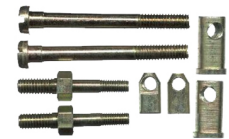
ATV-04

Tornillo Valeo Fronta
R-19 D VALEO
(M-5 x 45 mm C Allen)



ATV-10

Tornillo Renault Clio
Kangoo VALEO
(M-05 x 116 C8 mm)



AW-13

Tornillos WAPSA
y pernos Gol Senda
Sabeiro Diesel



BNG-29

Esparrago BOSCH
M-Benz
(M-6 x 180 mm)



BNG-30

Tornillo BOSCH
M-Benz
(M-6 x 175 mm c/e)



EJD-23

Tornillo BOSCH
Rastrojero IME
(M6 x 168 mm c/e)



FKB-02

Esparrago BOSCH
Arranque FKB
(M6 x 205 mm)



TORNILLOS LARGEROS DE ARRANQUE



MAG-28

Esparrago GAREF
Fiat 600
(M5 x 163m)



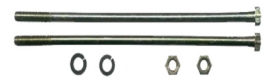
MAG-46

Tornillo GAREF
Fiat 128
(M5 x 190m c/m)



MAG-52

Esparrago GAREF
Fiat 1600
(M6 x 166m)



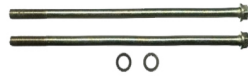
MAG-53

Tornillo GAREF
Fiat 125
(M6 x 165m c/m)



TCA-01

Tornillo INDIEL
Hitachi
(M5 x 120m c/e)



TCA-02

Tornillo Indie M74
Valeo Kangoo
(M5 x 115m c/e)



TCA-03

Tornillo BOSCH
RenaultDuna 1,7 D
(M5 x 162m c/e)



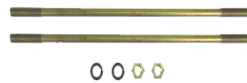
TCA-04

Tornillo BOSCH
Ford Escort
(M5 x 128 c/e 8)



TCA-05

BOSCH Fiat Duna D
Motor 1.7 Ford VW
(M5 x 160 c/e)



TCA-06

Esparrago
BOSCH
(M5 x 160)



FKB-02/1

Esparrago BOSCH
Arranque FKB
(M6 x 245 mm)



MAG-17

Tornillo GAREF
Fiat 1500
(M6 x 193 mm c/m)



TORNILLOS MASA POLAR



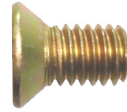
TMP-01

M/Polar FKB
BPD
(8x20)



TMP-02

M/Polar EJD
Bosch Rastrojero
(10x15) p1,5



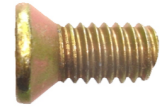
TMP-05

M/Polar Wapsa
Ford CAV
(3/8x17)



TMP-07

M/Polar Delco
Remy
(3/8x17)SAE



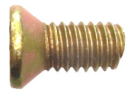
TMP-08

M/Polar BNG
Bosch (10x18)



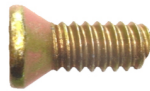
TMP-09

M/Polar Fiat 600
Garef
(10x13) p1,25



TMP-11

M/Polar Citroen
Tamatel (8x13)
Reforma Valeo
Cabeza 15.5



TMP-12

M/Polar Citroen
Indiel (8x17)



TMP-14

M/Polar Fiat
Tractor Garef
(10x17) p1,25



TMP-16

M/Pol Fiat 1500
1600 Garef
(10x14) p1,25



TMP-17

M/Polar Renault
Peugeot Sierra
(10x1) p1,5



TMP-18

M/Polar Fiat 128
125 Garef
(10x14) p1,25



TMP-21

M/Polar AN-115
Ika Ford USS
(3/8x18)



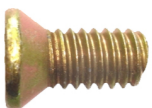
TMP-22

M/Polar AN-115
paso métrico
(10x18)



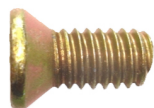
TMP-23

M/Polar Ford
Falcon Indiel
(3/8x 170)



TMP-29

M/Polar M-BENZ
Arran. Nashville
(10x18)



TMP-30

M/Benz Brasilerero
Bosch JE
(10X16)



TMP-31

M-Polar Wapsa
Delco
(3/8X18)SAE



TMP-32

M-Polar Delco
Remy Chevrolet
(3/8x20,5m) SAE



TMP-33

M/Polar M-93
M-100 Cabeza-14
(10x18)



TR-01

Tor. sujeta P/Carbon
Hitachi 4x10m C/E



AN-30

Tor.suj. P/Carbon
Arranque AN-115



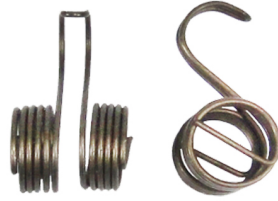
RESORTES DE PORTACARBON



REV-01
Resorte Arranque
M/Benz Brasil



REV-02
Resorte Arranque
Peugeot Tamatel



REV-03
Resorte Dinamo
Citroen Tamatel



REV-04
Resorte Arranque
Citroen Tamatel



REV-05
Resorte Dinamo
Fiat 600 Garef



REV-06
Resorte Dinamo
Fiat 1500 Garef



REV-07
Resorte Dinamo
Renault Indiel



REV-08
Resorte Arranque
Electrometalica



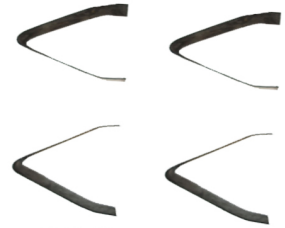
REV-09
Resorte Arranque
Siam



REV-10
Resorte Dinamo
Siam



REV-11
Resorte Dinamo
Rastrojero Bosch



REV-16
Resorte Arranque
Chevrolet Apache



REV-18
Resorte Arranque
Indenor Indiel



REV-19
Resorte Arranque
BPD



REV-21
Resorte Arranque
Jhon Deere



REV-22
Resorte Arranque
Nippon Denso



REV-22/1
Resorte Arranque
Nippon Denso



REV-25
Resorte Arranque
Ford Indiel



REV-26
Resorte Arranque
Renault Indiel



REV-27
Resorte Arranque
AN-115 Indiel



REV-28
Resorte Arranque
Fiat 1500 Garef



REV-29
Resorte Arranque
Fiat 600 Garef



REV-30
Resorte Arr.Garef
Fiat 128-125



REV-31
Resorte Arranque
Rastrojero Indenor



RESORTES DE ARRANQUE



REV-32
Resorte Arranque
Rastrojero Bosch



REV-33
Resorte Arranque
B N G Bosch



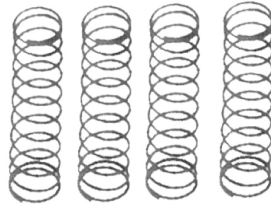
REV-34
Resorte Dinamo
IKA Renault



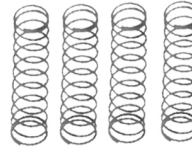
REV-35
Resorte Arranque
M/Benz Nashville



REV-36
Resorte Arranque
FKB Bosch



REV-37
Resorte Arran.
Ford Frontal Ind.



REV-38
Resorte Arranque
Duna Bosch



REV-39
Resorte Arranque
Wapsa



REV-40
Resorte Arranque
Tria



REV-41
Resorte Arranque
Valeo Trafic



REV-42
Resorte Arranque
Bosch



REV-43
Resorte Arranque
Duna D. Valeo



REV-44
Resorte Arranque
Duna Week. Bosch



REV-45
Resorte Arranque
Hitachi



REV-46
Resorte Arranque
Ducato M Marelli



REV-47
Resorte Arranque
Pari Rhone



REV-48
Resorte Arranque
Super Torque



REV-49
Resorte Arranque
Fiat 147



REV-50
Resorte Arranque
Lada



REV-51
Resorte Arranque
Toyota



REV-52
Resorte Arranque
Ford Motorcraf



REV-53
Resorte Arranque
Mazda



REV-54
Resorte Arranque
Motorcraf Chico



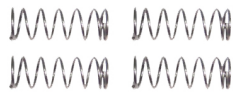
REV-55
Resorte Arranque
Motorcraf t Grande



RESORTES DE ARRANQUE



REV-56
Resorte Arranque
Bosch Mediano



REV-57
Resorte Arranque
Bosch Chico



REV-59
Resorte Arranque
Peugeot 405



REV-63
Resorte Arranque
Magnetti Marelli



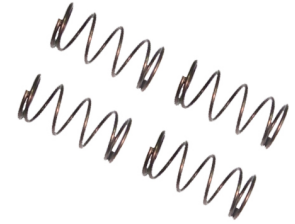
REV-64
Resorte Arranque
MWM Indiel



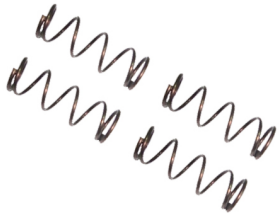
REV-65
Resorte Arranque
Renault Fiat Bosch



REV-66
Resorte Arranque
Mercedes Benz



REV-67
Resorte Arranque
M. Benz Bosch



REV-68
Resorte Arranque
Ducato Bosch



REV-69
Resorte Arranque
Agrícola



REV-70
Bomba dirección
Kangoo



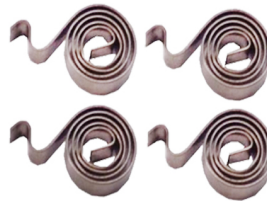
REV-71
Resorte Arranque
Wapsa



REV-72
Resorte Arranque
ToyotaDelcoRemy



REV-73
Resorte Arranque
Ford Fiesta



REV-74
Resorte Arranque
DelcoRemy



REV-75
Resorte Arranque
Indiel



REV-76
Resorte Arranque
Delco Remy 37MT



REV-77
Resorte Arranque
Toyota M. Benz



REV-78
Resorte Arranque
Hitachi Chico



REV-79
Resorte Arranque
Palio M. Marelli



REV-80
Resorte Arranque
Isuzu



REV-81
Resorte servicio
pesado



TAPAS DE AUTOMATICO



TAV-01
Tapa Apache



TAV-04
Tapa Delco Remy



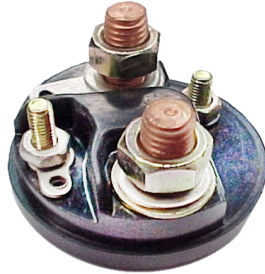
TAV-07
Tapa Taunus



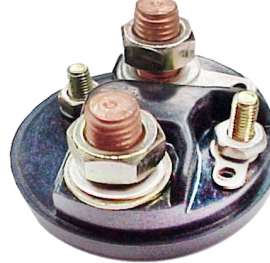
TAV-08
Tapa Renault 12 TS



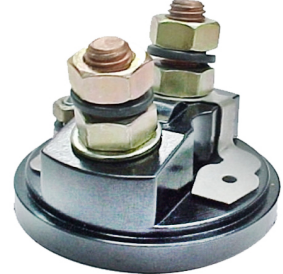
TAV-09
Tapa M/Bemz Brasiler



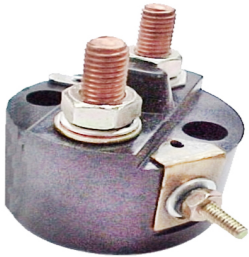
TAV-10
Tapa Chevrolet



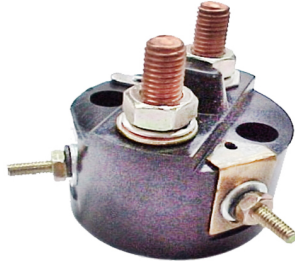
TAV-11
Tapa Renault 4



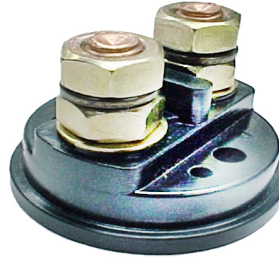
TAV-12
Tapa Renault 6



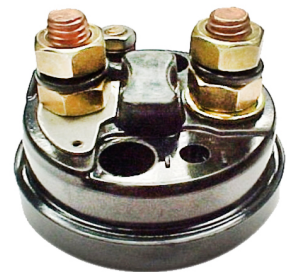
TAV-13
Tapa Tria 1 salida



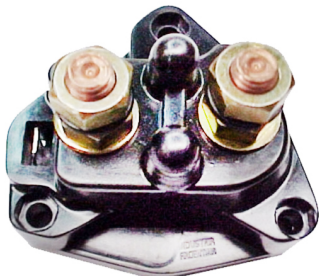
TAV-13/1
TapaTria 2 salidas



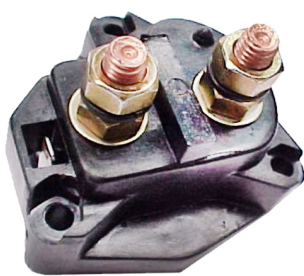
TAV-16
Tapa Nashville



TAV-17
Tapa Ford Sierra



TAV-19
Tapa Fiat 1500



TAV-20
Tapa Fiat 128-600



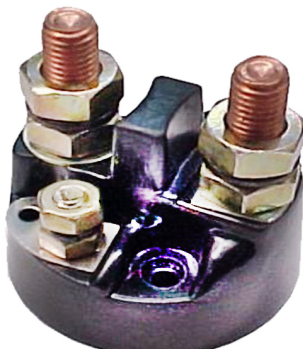
TAV-21
Tapa Indenor Indiel



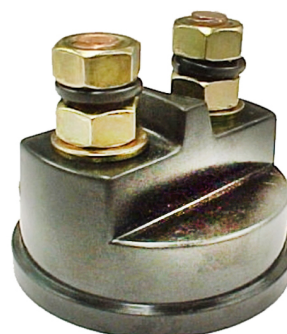
TAV-22
Tapa Rastrojero



TAV-23
Tapa AN-115 12 Vol.



TAV-24
Tapa AN-115 24 Vol.



TAV-25
Tapa Ford Diesel MWM



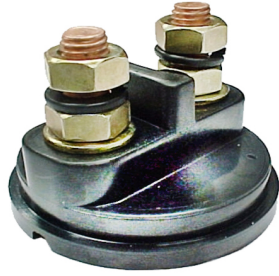
TAV-26
Tapa Fiat 619



TAPAS DE AUTOMATICO



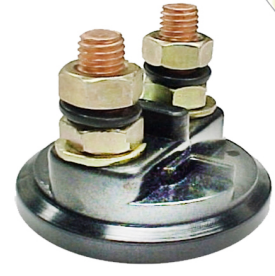
TAV-27
Tapa M/Benz
Super Torque



TAV-29
Tapa Duna -2



TAV-30
Tapa Renault 9 30



TAV-31
Tapa Valeo 35



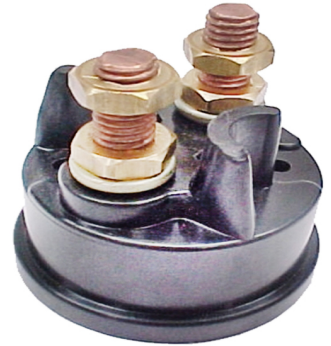
TAV-32
Tapa Hitachi 63



TAV-33
Tapa M/Benz
Brasileiro 45



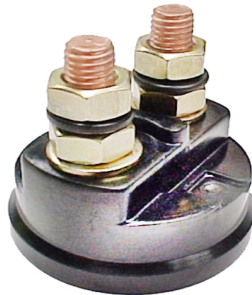
TAV-34
Tapa M/Marelli
Fiat 29



TAV-35
Tapa Delco
Remy Grande



TAV-36
Tapa DAIHATSU



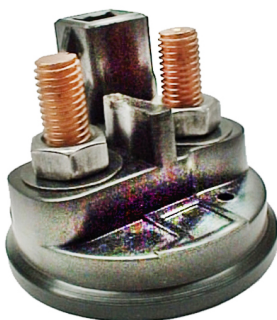
TAV-37
Tapa Motorcraf Ford



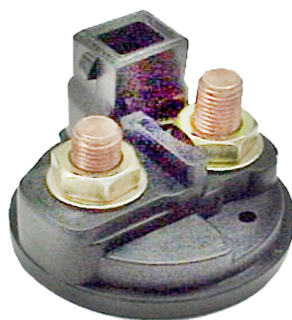
TAV-38
Tapa Nippon
Denso Daihatsu



TAV-39
Tapa Marelli Fiat



TAV-40
Tapa Bosch
c/enchufe



TAV-41
Tapa Indiel
c/enchufe



TAV-42
Tapa Nipon
DenssoCamion



TAV-43
Tapa AN-115
Mod. Nuevo



ATR-41
Tornillo cobre
Tapa Renault



MAG-03
Tornillo
auto. Fiat



AN-03
Tornillo tapa
AN-115 12 vol.



AN-07
Tornillo Tapa
AN-115 24vol.



EJD-119
Tornillo
Rastrojero



REPARACIONES DE AUTOMATICO



EJD-120
Tornillo de cobre
Rastrojero (Largo)



ATT-16
Tornillo de cobre
automático Tria



DV-004
Tornillo de cobre
Delco Remy



TH-12
Tornillo 10
mm corto



TH-12/1
Tornillo 10
mm largo



TH-13
Tornillo 8
mm corto



TH-13/1
Tornillo 8
mm largo



AN-01
Puente de cobre
AN-115 Iniel



AFS-26
Puente de cobre
FRONTAL Indiel



ATR-42
Puente de cobre,
Renault Indiel



MAG-02
Puente de cobre
automático Fiat



ATR-43
Juego Renault 12TS



AN-38
Juego AN-115 12Vol



AN-39
Juego AN-115 24 Vol



AFS-29
Juego Ford Taunus



ATR-18
Salida de campo
Renault 10 m/m



ATR-18/1
Salida de campos
Renault 16 m/m



AFF-08
Punte de Cobre
Ford Indiel



AII-16
Salida arranque
Indenor



AW-05
Malla de salida
Wapsa Senda D



AN-12
Terminal Bronce
AN-115 12 vol.



AN-13
Terminal Bronce
AN-115 24 vol.



REPARACIONES DE AUTOMATICO



TH-02
Contacto Nippon
Denso 2,4-4kw



TH-03
Contacto Nippon
Denso 2,4-4kw



TH-04
Contacto 1-1,2kw
Nippon Denso



TH-05
Contacto 2,5-4kw
Nippon Denso



TH-06
Contacto Nippon
Denso 2,4-4kw



TH-07
Contacto Nippon
Denso 2,4-4kw



TH-08
Contacto 1,2kw
Nippon Denso



TH-09
Contacto
Nippon Denso



TH-10
Contacto
Nippon Denso



TH-11
Contacto
Nippon Denso



TH-14
Contacto
Nippon Denso



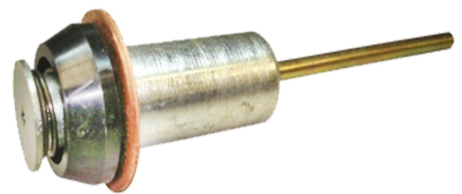
ATT-05
Contacto Tria



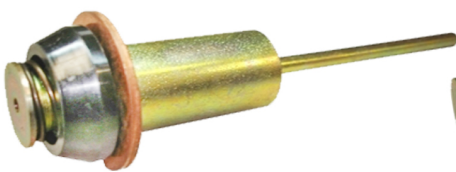
TH-20
Embolo Pick up Isuzu
Mazda Toyota Diesel
LUV Trooper 2,2 D.
L=96; L1=8,4; L2=36,5;
D1= 36,8; D2=20,5; D3=5



TH-22
Embolo Dodge Caravan
Toyota celica Caryde
L=96,6; L1=5,5; L2=39,2;
D1=35; D2=20,6; D3=5



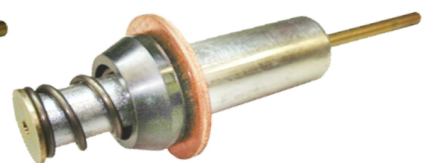
TH-23
Embolo Toyota 24Vol.
L=125,3; L1=5,5; L2=68
D1=35; D2=20,6; D3=5



TH-24
Embolo
L=124,6; L1=7,7; L2=64,6
D1=36,8; D2: 20,6; D3=5



TH-25
Embolo Nippon Denso 2,5 - 3,0
- 4,5 - 5,5Kw 24V
L=119,4; L1=20; L2=41
D1=39,7; D2=20,6; D3=5



TH-26
Embolo Nippon Denso 2,5-
3,0 - 4,5 - 5,5KW 12V
L=119,4; L1=20; L2=43
D1=39,7; D2=20,6; D3=5



TORNILLOS DE AUTOMATICO



ATR-06
Tapon de Registro automatico Renault



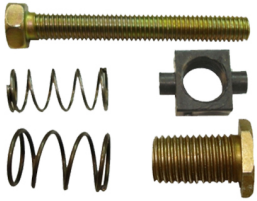
ATR-09/1
Tuerca de Registro Nylon



ATR-01
Registro automatico Renault T/ de Hierro



ATR-01/1
Registro automatico Tuerca de Nylon



AFF-18
Registro automatico INDENOR



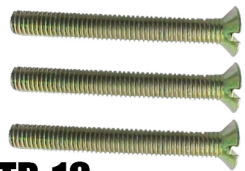
AFS-25
Registro completo Frontal Taunus



AFS-27
Registro Frontal Renault Torino



ATR-13
Tornillo de registro Renault Peugeot



ATB-16
Tornillo S/A Bosch JF Mercedes Benz M/5 x 40mm



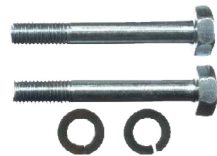
ATV-20
Torr. sujeta autom. Valeo Kango M4X34



AW-08
Tornillo sujeta autom. Wapsa Senda Diesel M-6x56mm C/cilindrica



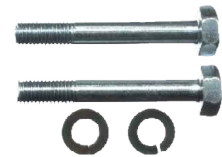
ATR-14
Espárrago autom. Renault Indiel



AN-16
Tornillo autom. AN-115 6x25



AN-08
Tor. autom 1/4 nf x44 AN-115 Indiel M.V



MAG-04
Tornillo de cierre de automatico Garef



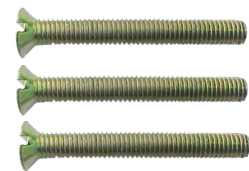
AFS-05
Tornillo S/A Frontal M-93 Indiel M5 x 40



AFS-05/1
Tor. S/A Bosch Ford Renault M-5 x 34 mm



AFS-05/2
Tor. S/A Ford MWM M-6x38mm



ANB-01
Tor. sujeta Autom. Bosch Brasil



ATR-19
Esparrago Auto. Marelli 52mm



ATR-19/1
Esparrago Autom. Marelli 44mm



AFF-09
Salida de campo Ford Indiel



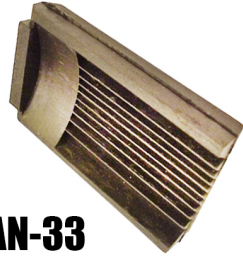
AW-07
Tornillo de salida de campos completa



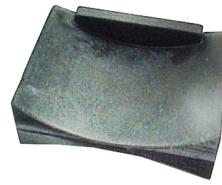
TACOS DE GOMA



ATR-38
Goma automatico
indiel Frontal



AN-33
Goma automatico
M-Benz AN-115



AN-11
Goma automatico
AN-115 Ford



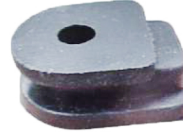
AN-04
Goma automatico
AN-115 Indiel



ATR-16
Goma salida
de campos Renault



ATR-20
Goma aislante salida
de campos Renault



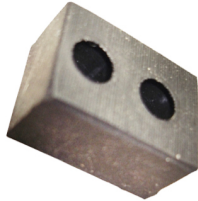
MAG-06
Goma aislante salida
de campos Garef



AN-22
Goma aislante salida
de campos AN-115



AN-23
Aislante salida de
campos (Picadillo)



ATB-21
salidade campo
Bosch M-Benz



AN-20
Goma de tornillo
pasante AN-115



AN-20/1
Goma de tornillo
pasante AN-115



AN-32
Suncho Arranque
Portacarbon



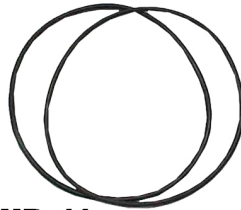
AN-17
Goma Reten
tapa AN-115 Ind.



AN-19
Reten de tapa
inter. AN-115 Ind.



BNG-104
Goma reten tapa
guardapolvo BNG



ANB-11
Goma reten de
tapa M-Benz Brasil



GO-003
Goma Cierre
M Benz Mod Nuevo



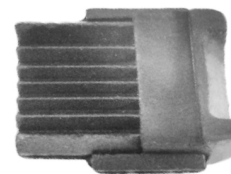
GO-004
Goma Aislacion
Carcaza Delco Remy



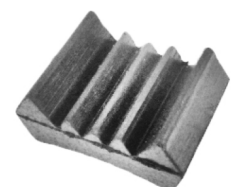
ATV-55
Goma cierre
arranque Valeo



GO-005
Goma Cierre
Hitachi M74R



GO-006
Goma Cierre
Hitachi M74R



GO-010
Goma Cierre
Ford Taunus



ARANDELAS



AN-29
Arandela 12 Vol.
Autom. AN-115
20 x 10 x 1 Hierro



MAG-26
Arandela eje lado
colector Garef
16 x 11 x 05 hierro



MAG-30
Arandela lado
colector Garef
16 x 11 x 1 hierro



AFS-15
Arandela lado
colector Fronta
19 x 11 x 1 Hierro



ATR-28
Arandela eje lado
colec. Renault Tria
19x12x05 Hierro



ATT-09
Arandela lado
colector Tria
20 x 12 x 2 Hierro



AN-28
Arandela 24 Vol.
Autom. AN-115
22 x 12 x 01 Hierro



ANB-012
Arandela lado
colector Nashville
29 x 14 x 05 Hierro



EJD-057
Arandela lado
colector Rastrojero
29 x 14 x 1Hierro



ANB-13
Arandela lado
colector Nashville
29 x 14 x 1Hierro



AN-34
Arandela lado
colectorAN-115
24 x 15,5 x 05 Hierro



AN-35
Arandela eje lado
colectorAN-115
24 x 15,5 x 05Hierro



ATB-07
Arandela l.colec.
Bosch Bras
30 x 16 x 02Acero



ATB-08
Arandela lado
colector .Bosch Brasil.
30 x 16 x 05Hierro



AII-13
Arandela Colector
Bosch JF Rast. M Benz
30 x 16 x 2Hierro



AIF-11
Arandela de eje
intermedia Ford
30 x 17 x 1



ATT-02
Arandela de metal
Intermedia
35 x 19,5 x 1



MAG-14
Arand. eje lado
impulsor Garef
33 x 20 x 2



AFS-17
Arandela Bendix
Frontal Sierra
26 x 22 x 2



AIF-12
Arandela de eje
intermedia Ika
42 x 26,2 x 1 Hierro



AN-18/1
Arandela tapa
intermedia AN-115
35 x 26,5 x 1



AIF-07
Arandela plana
impulsor IKA
34x32x1



ATV-08
Arandela de respaldo
Reductor Valeo



AIF-06
Arandela elástica
de impulsor
Ford IKA



ARANDELAS



ATB-19
Arandela traba de freno
Bosch JF Mercedes



ATV-19
Arandela traba de
freno Bosch JF M.Benz



ATV-25
Aran. comp. de
reductor Valeo y
Bosch Fiat Renault



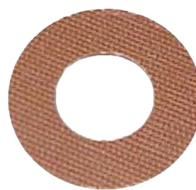
ATR-29
Arandela eje lado
colector Renault Tria
19 x 12 x 1 Micarta



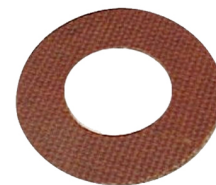
AII-13
Arandela lado
colector P.Rhon
25 x 13 x 1 Micarta



ANB-18
Arandela lado colector
Nashville Bosch EJD
29 x 14 x 1 Micarta



AII-10
Arandela lado
impulsor Indenor
26 x 15 x 2 Micarta



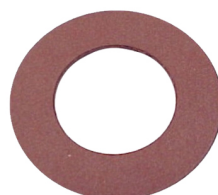
AII-07
Arandela lado
colector Indenor
29 x 15 x 1 Micarta



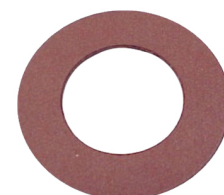
AII-10
Arandela lado
colector Indenor Ind
29 x 15 x 2 Micarta



AIF-04
Arandela lado
colector Ika Ford
30 x 16 x 1 Micarta



ATT-01
Arandela lado
colector Polara
35 x 19,2 x 1 Micarta



ATT-02
Arandela lado
colector. Polara
35 x 19,2 x 2 Micarta



EJD-49
Arandela Freno
colector Polara
40 x 19 x 1,5Micarta



AN-18/2
Arandela intermedia
IndielAN-115
36,5 x 26,5 x 1micarta



AN-18
Arandela intermedia
IndielAN-115
36 x 26,5 x 1Nylon



AN-35-1
Arandela eje lado
colector Ika Ford
24 x 15,5 x 1Nylon



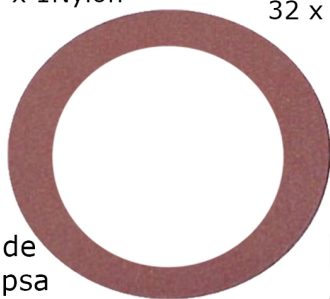
AFF-03
Arandela eje lado
colector Ika Ford
32 x 17 x 1 Nylon



AIF-13
Arandela eje lado
colector Ika Ford
32 x 17 x 2 Nylon

AN-18-KIT

KIT AN-115 fina y AN-115 gruesa
35 x 26,5 x 1
36 x 26,5 x 1
Int: 15,87 mm



AW-06
Arandela de
cierre Wapsa
69 x 50 x 2



BNG-45
Arandela Perno de guia
arranque BNG 31 x 17 x 1,5Fibra



ATR-29-1
Arandela eje lado
colector Renault
19 x 12 x 1 Nylon



ARANDELAS



ATR-15
Freno 4 Piezas
Renault-Peugeot



ATR-15/2
Freno 4 Piezas
Rosca Izquierda



AFS-012
Freno conjunto
Ford-Renault-Fiat-
Peugeot M-93



AFS-012/1
Freno conjunto
Ford scort Izq



AFS-012/2
Freno conjunto
Frontal Chico



EJD-039
Freno conjunto
EJD Bosch



ANB-07
Freno conjunto
Nashville Brasil



MAG-015
Arandela Conica
Arranque Fiat Garef



MAG-16
Arandela Freno
Arranque Fiat Garef



ATR-024
Arandela freno
Arranque Indiel



ATR-025
Arandela freno
Arranque Indie



ATR-027
Arandela traba
Arranque Indiel



ATR-026
Tornillo de freno
Arranque Indiel



ATR-026/1
tornillo de
freno rosca Izquierda



ATR-32
Tope de Bobina
Renault Peugeot
Prestolite Indiel



MAG-57
Tope de bobina
Fiat 125 -Alto
GarefM-Marelli



ATH-01
Tope de Bobina 12 Vol M-93
Prestolite Indiel Mercedes Ford
VWInterior 21,5m-m



ATH-02
Tope de Bobina 12-24 V
Prestolite Indiel VW
Volvo Ford Int. 17,5 m-m



MAG-45
Tope de Bobina
Fiat 128 Bajo
Garef M-Marelli



ARRANQUE BNG



BNG-49
Tornillo de Portacarbón



BNG-52
Tornillo de Portaescobilla



BNG-55
Puente de cobre



BNG-57
Borne de salida recto (Positivo)



BNG-58
Borne de potencia curvo (Positivo)



BNG-79
LLave de eje tensor BNG



BNG-78
Borne conexion masa (negativo)



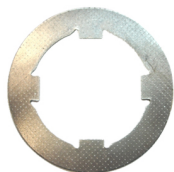
BNG-087
Borne de automático



BNG-104
Junta de tapa guardapolvo



BNG-120
Disco Levanta Gatillo



BNG-138
Arandela estria interior hierro



BNG-139
Arandela de bronce grande



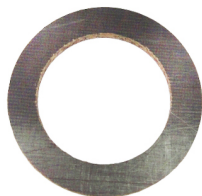
BNG-135
Embrague completo



BNG-140
Arandela bronce estria exterior



BNG-141
Seguro de embrague



BNG-142
Arandela respaldo de embrague



BNG-143
Arandela fina suplemento



BNG-144
Arandela de espesor rectificada



BNG-145
Arandela de choque Templada



BNG-170
Tapa de arranque BNG Bosch



BNG-520
Gatillo completo largo BNG



BNG-520-A
Gatillo completo antivibratorio



BNG-122
Eje Tensor
BNG-122/1
Eje Tensor BPD



BNG-121
Tornillo de Colector



BNG-505
Tornillo de Automático



BNG-528
Juego de contactos Corto BNG



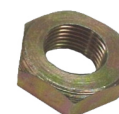
BNG-530
Juago de contacto antivibratorio



BNG-159
Arandela punta de eje



BNG-162
Tuerca castillo de bobina



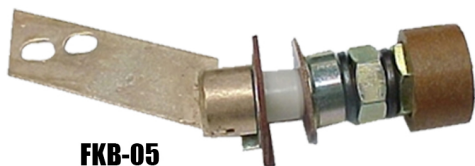
BNG-161
Contratuerca eje de bobina



ARRANQUE BNG



FKB-003
Borne de
Masa negativo



FKB-05
Borne de potencia

FKB-12
Tensor Largo
FKB-12/2
Tensor Med.
FKB-12/1
Tensor corto



FKB-11
Aran.colector
22,5 x 32 x 0,5



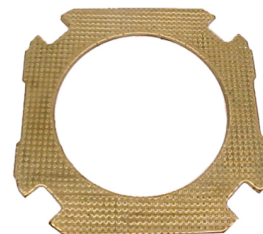
FKB-13
Seguro de
usillo



FKB-14
Arandela traba
de usillo



FKB-19
Arandela de
regulacion Hierro



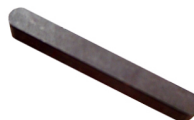
FKB-21
Arandela estria
interior de Bce.



FKB-22
Arandela estria
interior Hierro
66,5 x 40 x 3



FKB-23
Arandela de
sobrecarga



FKB-25
Chaveta FKB



FKB-26
Tuerca de eje
tensor todos



FKB-27
Arandela traba
de eje tensor



FKB-30
Tapa de
inducido FKB



FKB-29
Arandela de
apolo de tapa
bronce



FKB-33
Tornillo de tapa
FKB Bosch



FKB-31
Arandela tope
FKB Bosch



FKB-08
Separador
FKB Bosch



FKB-32
Arbol interedio
completo FKB



FKB-34
Tapa de FKB Bosch



BNG-26/1
Conjunto retén
completo



BNG-27
Tornillo de tapa
retén BNG



BNG-43
Perno de guía



BNG-44
Tornillo de
Perno de guía



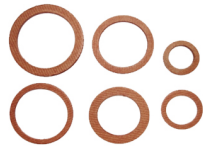
BNG-45
Arandela de
perno de guía



DESPIECES VARIOS



DV-010
Aro Plástico
de bocina Ford



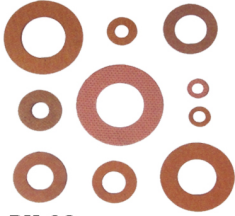
DV-60
Bujes surtidos
Micarta



DV-78
Arandelas surtidas
Aluminio



DV-044
Seguro Seeger
surtido



DV-63
Arandelas
surtidas (Fibra)



DV-79
1/8 Fibra
Int: 3,17m



DV-80
5/32 Fibra
Int: 3,97mm



DV-81
3/16 Fibra
Int: 4,75 mm



DV-82
1/4 Fibra
Int: 6,35 mm



DV-83
5/16 Fibra
Int: 7,94 mm



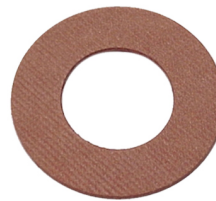
DV-84
3/8 Fibra
Int: 9,52 mm



DV-85
7/16 Fibra
Int: 11,11mm



DV-86
1/2 Fibra
Int: 12,7mm



DV-87
9/16 Fibra
Int: Int 15,87mm



DV-88
5/8 Fibra
Int: 19,05 mm



DV-65
Arandelas
surtidas (Micarta)



DV-89
1/8 Micarta
Int: 3,17 mm



DV-90
5/32 Micarta
Int: 3,97 mm



DV-92
1/4 Micarta
Int: 6,35 mm



DV-93
5/16 Micarta
Int: 7,94 mm



DV-91
3/16 Micarta
Int: 4,75 mm



DV-94
3/8 Micarta
Int: 9,52 mm



DV-95
7/16 Micarta
Int: 11,11mm



DV-96
1/2 Micarta
Int: 12,70 mm



DV-97
9/16 Micarta
Int: 14,29 mm



DV-98
5/8 Micarta
Int: 15,87 mm



DV-99
3/4 Micarta
Int: 19,05 mm



DV-100
Tuercas rapidas
surtidas



DV-100-6
Tuercas
rapidas N6



DV-100-10
Tuercas
rapidas N10



DV-100-8
Tuercas
rapidas N8



DV-100-12
Tuercas
rapidas N12



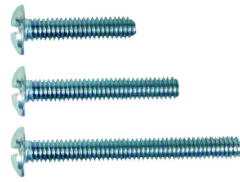
DV-101
Tornillo Parker
surtidos



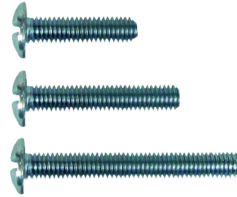
DESPIECES VARIOS



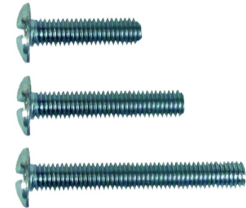
DV-102
Arandelas de presión surtidas



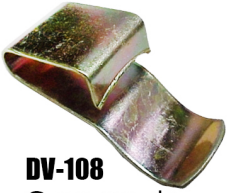
DV-103
Tornillos c/redonda surtido 1/8



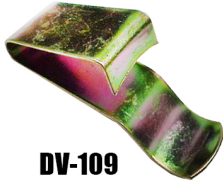
DV-104
Tornillos c/redonda surtido 5/32



DV-106
Tornillos c/tanque surtido 3/16



DV-108
Grampas de chasis chica



DV-109
Grampa de chasis mediana



DV-110
Grampas de chasis grande



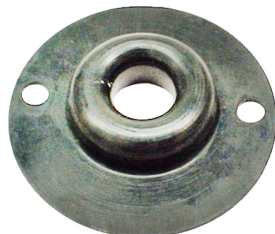
DV-117
Chavetas clip



DV-139
Abrazadera amurable grande



DV-119
Remaches surtidos



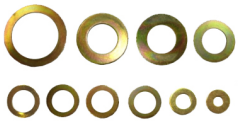
DV-130
Goma reten deAlta/Baja



DV-130/2
Goma salida motor Alta y Baja



DV-140
Abrazadera amurable mediana



DV-118
Arandelas surtidas



DV-130/3
Tornillo de cierre Alta y Baja



DV-141
Abrazadera amurable chica

DV-133
Presinto plastico sin ojal 140m/m



DV-134
Presinto plastico sin ojal 180m/m



DV-135
Presinto plastico sin ojal 225m/m



DV-142
Abrazadera de apertura



DV-150
Arandela aluminio 8x13



DV-151
Arandela aluminio 10x14



DV-152
Arandela aluminio 12x17



DV-131
Gomas pasacables



DV-153
Arandela aluminio 14x20



DV-154
Arandela aluminio 16x21

DV-143
Adaptador de lamparas de bido



DV-124
Grampa de Chasis universal Acero



DV-123
Grampa de carroceria ubiversal Acero



DV-155
Arandela aluminio 18x23



DV-156
Arandela aluminio 20x26



DV-157
Arandela aluminio 22x28